

# DockinaBox®

LEADING EDGE TECHNOLOGY & DESIGN



[DOCKINABOX.COM](https://dockinabox.com)



# CELEBRATING 26 YEARS

DOCKINABOX.COM



## BUY A PRODUCT THAT'S BUILT TO LAST!

For over 2 decades, we have continued to manufacture only the most technically advanced, feature rich product that serve our client's needs. Our philosophy is quite simple... keep tolerances low and reliability high.

With over 30 years in the marine industry, DockinaBox® has the experience to assess your needs and ensure your purchase fulfills your requirements. We continue to use only the best materials, the most cutting-edge technology and skilled craftsmanship to produce the safest, most reliable and most adaptable dock systems, lifts and accessories on the market today.

DockinaBox® continues to service our clients, design new product and manufacture world class aluminum docks, boat lifts and accessories right here in Canada! Located just north of Toronto, DockinaBox® has over 40,000 square feet of manufacturing, distribution and warehouse facilities and boasts the largest indoor / outdoor showroom around. We invite you to come see us and fully interact with all of our products, both in and out of the water, because when you buy from DockinaBox® you're buying a product that's built to last!



Hello,  
I'm the  
Professor.  
Look for  
me to  
guide you through  
the unique features  
and benefits of  
our products. For  
example, did you  
know our testing  
exceeds National  
Building Codes for  
weight capacity?

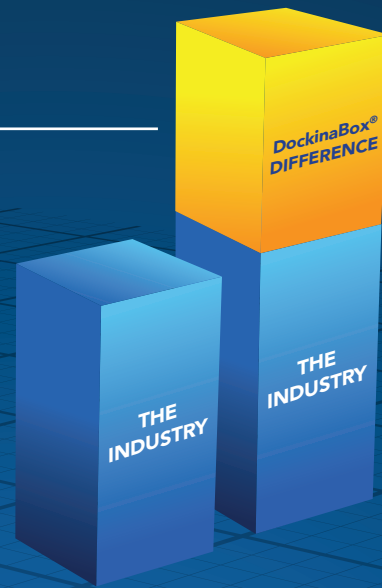
# CUTTING EDGE TECHNOLOGY. UNIQUE DESIGNS.

MADE IN CANADA

ABOUT US

DockinaBox® patented products are designed and manufactured with precision and craftsmanship using technology unlike any other dock companies:

- DeckWave® Technology: low maintenance, non-slip, never hot, wave pressure dispersion, highest fatigue resistance with fastener-less installation
- Multi Chambered Frame: Increase load strength and rigidity for stability, comfort and safety
- Traction Safety Strip: Beveled and radiused side rails with 13 groove strips over a 2" distance ensuring safe ingress & egress
- Advanced Welding Technology & Robotics: Structural Integrity, Reliable & Repeatable Consistency with enhanced Durability using CMT Technology
- Wider Docks: Typically 2 1/2" wider than competitor and on average a 4% larger dock system
- Enhanced Decking Support: Six foot wide docks have 4 decking supports (14" Centres)
- CAD-CAM technology utilized in manufacturing for extreme precision
- All stainless steel hinges & hardware



## PIPE DOCKS:

- Patented Angled Legs: Stability, Strength and Safety, allows for use in deeper water applications
- Oversized Reinforced Footpad: Industry leading design allows pipe extension through footpad for more secure anchoring

## FLOATING DOCKS:

- Specially Designed heavy density foam wall float (no styrofoam): 30lbs/sq.ft buoyancy virtually eliminates corners from dipping and creates optimum ice lifting characteristics during the winter freeze
- Locking Hinges: Enables floating sections to become one rigid section utilized with our multi chambered frames

## WHY DO WE BUILD OUR PRODUCTS THE WAY WE DO?

Simple...Durability, Safety and Low Maintenance are the hallmarks of DockinaBox®.

Using Cold Metal Transfer welding, Yaskawa robotics and Canada's largest in ground shuttle roto-molding machine, we produce 90% of our products right here in Canada. We then use vigorous and punishing testing to assure we meet the highest standards. Modern in design, our products are durable and safe. Always challenging the status quo of the industry, we are constantly adding to our existing library of 20 Canadian and US patented and trademarked products.

When you buy a DockinaBox® product, it's manufactured by design, technology and experience to outlast the competition and by using premium materials, DockinaBox® has achieved almost 100% recyclable components on all dock and lift products - a first in the industry!



Example of Severe Weight Testing



Advanced CMT Robotic Welding Technology



Canada's Most Modern Rotomolding Machine



Constant Harsh Conditions





# DECKWAVE®

[DOCKINABOX.COM](http://DOCKINABOX.COM)

## DECK WAVE®

### SEE THE DIFFERENCE

Gone are the days of sanding, staining, weatherproofing and repairing wood deck boards or assuming the high price of poor performing composites.

DeckWave® decking, exclusive only to DockinaBox®, continues to outperform, outlast and outsell every competitors product.

Consumers are shying away from the traditional wood dock option as natural wood materials such as cedar or the new pressure treated options are expensive and only prove to have a short lifespan due to the lack of preservatives and resin found in current wood products.

Wood docks not only yield a shorter lifespan but require continual maintenance, ie. warping, splinters, nails, staining etc.

Alternately, DeckWave® decking is manufactured using structural foam infused co-polymer fiberglass reinforced plastic through a low-pressure cellular injection process which diminishes the likelihood of cracking and fading and in fact, has the highest strength to weight ratio when compared to other composite decking products on the market.



**DeckWave® has been used by government ministries and agencies, harbor masters, marinas and landscapers across North America.**



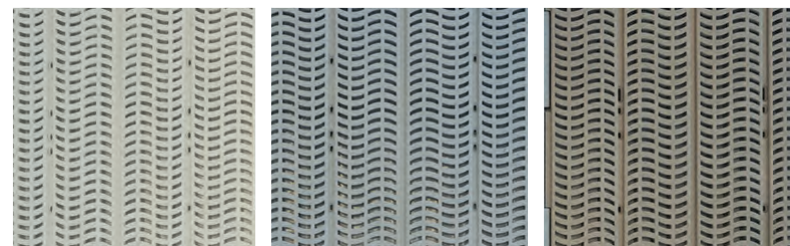
# THE NEW EVOLUTION OF CO-POLYMER FIBER INFUSED DECKING

MADE IN CANADA

DECKWAVE® DECKING

Our exclusive DeckWave® decking features:

- Lightweight and physically manageable
- Never hot to touch, even in direct sunshine
- Superior traction when wet and dries fast
- **Vented design to disperse negative effects of wave action on your dock**
- **Dedicated cleat mounting locations on every panel**
- **Gap free vertical interlocking flex tab for clean seamless look**
- Known to reduce birds congregating on the dock
- Stain resistant, virtually no maintenance
- Crack resistant in extreme cold and when drilled
- Yes it is recyclable



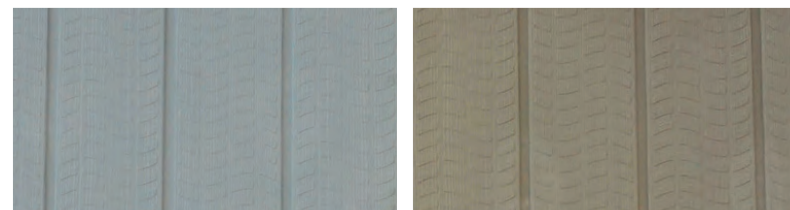
Sand

Grey

Beige

## DECKWAVE® - VENTED

Size	Weight (lbs)	Colour	Price
2' x 4'	13	Sand, Grey, Beige	\$120.00
2' x 6'	23	Sand, Grey, Beige	\$175.00



Grey

Beige

## DECKWAVE® - SOLID

Size	Weight (lbs)	Colour	Price
2' x 4'	14	Grey, Beige	\$120.00
2' x 6'	24	Grey, Beige	\$175.00



# STANDARD DUTY MODULAR PIPE SERIES

DOCKINABOX.COM

## INNOVATIVE DESIGN. PATENTED TECHNOLOGY.

Removable aluminum pipe docks are the option of choice for cottagers, waterfront communities and marinas. Whether it's a simple design for your watercraft or you plan on creating a water entertainment center, DockinaBox® can provide the dock and design to suit your lifestyle and needs.

The Standard Duty Pipe Series Dock is one of our most popular options. It's robust enough to handle the elements and ideal for small bodies of water like the Muskoka's and Kawartha's, with waves no bigger than 3 feet. Weighing an average of 80 lbs. per frame, two people can easily manage its installation and annual removal.

Our modular design allows you to expand and add to your existing dock and design at any time, whether it's a patio, swim deck or an extra boat slip.

All Standard Duty Pipe Series docks come equipped with our DeckWave® decking, leg pockets, brackets, foot pads and hardware in accordance with your configuration.



Side Mount

End Mount

### Rough Water Hold Down Kit - \$185

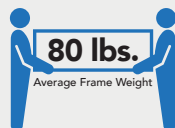
Keep your dock firmly planted to the lake bottom in rough conditions. Includes 245 lb. anchor, 6' chain and hardware bracket.



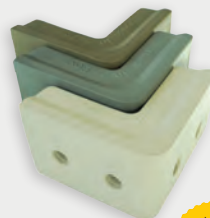
### Vertical Sliding Bumpers for Side from \$180

These exclusive bumpers protect your vessel & dock regardless of water level heights. Horizontal & vertical adjustability. Available in 30" or 42" lengths.

## FEATURES



DECK WAVE



### Designer Corner Bumpers - \$95

DockinaBox® exclusive design that protects your watercraft and swimmers as well. Our bumper covers top, side and bottom of the dock.



### Telescopic Cross Brace from \$165

Optional telescopic cross braces add increased stability in deeper water conditions of 5 ft. or more.

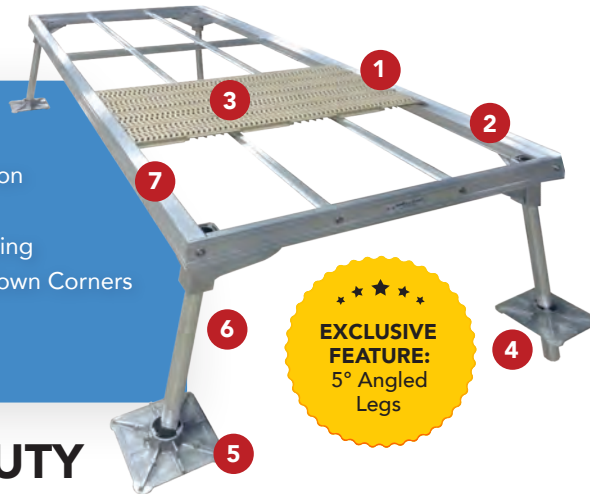


# CUTTING EDGE TECHNOLOGY. UNIQUE DESIGNS

MADE IN CANADA

STANDARD DUTY PIPE DOCK

1. Slide in Deck Track
2. Dual Chambered Frame Extrusion
3. DeckWave®
4. Additional Lake Bottom Anchoring
5. Oversized Footpad with Turn Down Corners
6. 5° Angled & Adjustable Legs
7. Safety Side Traction Strip



EXCLUSIVE  
FEATURE:  
5° Angled  
Legs

## STANDARD DUTY

DockinaBox® has designed, developed and rigorously tested our technology for over 25 years to bring you the best pipe dock available on the market today and loaded with features:

- Dual chambered frames ensuring your dock resists flexing and warping caused by wave action and the mooring of watercraft
- Exclusive DeckWave® decking easily slides in and out, making installation and removal more manageable. It's never hot, requires low to no maintenance and has superior traction when wet
- **Patented 5° Adjustable Angled Legs** providing proven structural integrity and stance for increased stability and comfort
- Oversized footpads allow leg pipes to extend through the footpad providing additional security when anchoring the dock
- All docks welded with CMT technology

Size	Ramp Includes Frame & Decking	Self Standing Includes Frame, Decking, 4-Leg Assemblies and Hardware	Add End Includes Frame, Decking, 2-Leg Assemblies and Hardware	Add Side Includes Frame, Decking, 2-Leg Assemblies and Hardware	Add Back/Side (L/R) Includes Frame, Decking, 1-Leg Assembly and Hardware	Notched End Cap	End Cap <small>Required on Open Ends of Dock Frame</small>
3 x 8	\$1,223	\$2,048	\$1,680	\$1,750	\$1,659	NA	\$105
4 x 8	\$1,680	\$2,504	\$2,137	\$2,207	\$2,116	\$137	\$110
4 x 10	\$2,065	\$2,890	\$2,522	\$2,592	\$2,501	\$137	\$110
4 x 12	\$2,507	\$3,332	\$2,964	\$3,035	\$2,943	\$137	\$110
6 x 8	\$2,386	\$3,210	\$2,842	\$2,913	\$2,821	\$147	\$121
6 x 10	\$2,777	\$3,602	\$3,234	\$3,304	\$3,213	\$147	\$121
6 x 12	\$3,368	\$4,193	\$3,825	\$3,896	\$3,804	\$147	\$121

Pipe legs sold in 6" increments - 1.9" OD, 1½ Schedule 40 = \$11.00/ft. or 1.9" OD 1½" Schedule 80 = \$16.50/ft, Tri-Rib = \$16.50/ft.  
NOTE: Schedule 80 or Tri-Rib pipe is recommended for pipe lengths of 7ft or more.

Our exclusive,  
patented angled  
legs make our docks  
more stable than any  
straight leg design.



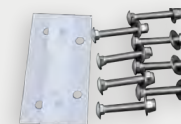
### Mud Pads - \$90

Prevent pipe legs from sinking in muddy or silty lake bottoms where 6" of sinking is possible.



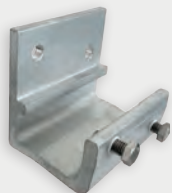
### Std Duty Hinge - \$95

Used when a slope is required.



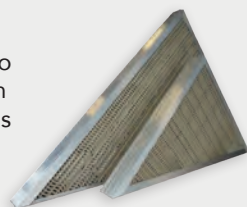
### Hinge Hardware - \$25

Used when a slope is required.



### Shore Mount Bracket - \$60

Connecting your dock to shore, a break wall or an existing dock structure is easy with our shore mounting bracket.



### Standard Duty Inside Corner

Enhance the appearance of your dock by adding up to 18 sq.ft. of space.

4' x 4' - \$925  
6' x 6' - \$1,225



### Flip Up Dock Cleats from \$35

Eliminate trip hazards with these sleek looking cleats that flip up for mooring watercraft and flip down when not in use. See accessories for options.



# HEAVY DUTY MODULAR PIPE SERIES

DOCKINABOX.COM

## INNOVATIVE DESIGN. PATENTED TECHNOLOGY.

Bodies of water come in all shapes and sizes. You need a dock that matches the elements you face every season. To meet that need, we have engineered our Heavy Duty Series dock system to match your waterfront and conditions.

Equipped with our 7° angled leg design for superior strength and stability, the Heavy Duty Series is designed for abuse and has proven to be as tough as they come. Tested in some of the roughest conditions on large lakes, including Lake Simcoe, Nipissing, and Georgian Bay, our docks continue to stand up against rough elements year after year.

Our vented, high performance DeckWave® decking is an essential piece of the Heavy Duty series, allowing wave energy to disperse through the decking and diminish strain on your dock. Like our other series, you can choose the colour of your decking which is included in your dock purchase, as are the leg pockets, brackets, foot pads and hardware in accordance with your configuration.

### FEATURES



DECK WAVE



### Hold Down Kits - \$185

Keep your dock firmly planted to the lake bottom in rough conditions. Includes 245 lb. anchor, 6' chain and hardware bracket.

Side Mount

End Mount



### Vertical Sliding Bumpers from \$185

These exclusive bumpers protect your vessel & dock regardless of water level heights. Horizontal & vertical adjustability. Available in 30" or 42" lengths.



### Designer Corner Bumpers - \$95

DockinaBox® exclusive design that protects your watercraft and swimmers as well. Our bumper covers top, side and bottom of the dock.



### Telescopic Cross Brace - \$165

Optional telescopic cross braces add increased stability in deeper water conditions of 5 ft. or more.

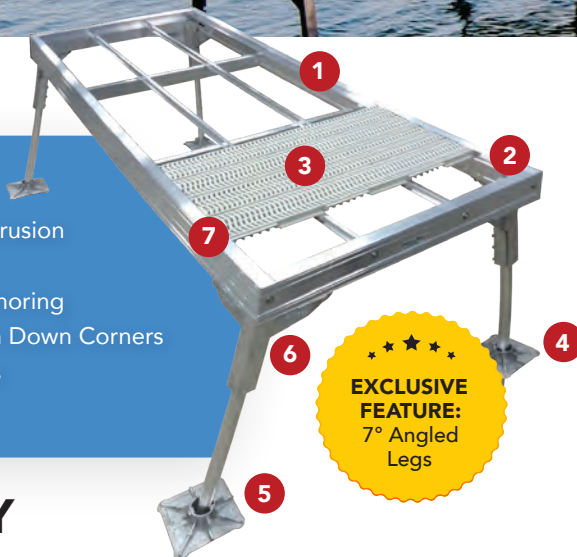


# CUTTING EDGE TECHNOLOGY. UNIQUE DESIGNS

MADE IN CANADA

HEAVY DUTY PIPE DOCK

1. Slide in Deck Track
2. Triple Chambered Frame Extrusion
3. DeckWave®
4. Additional Lake Bottom Anchoring
5. Oversized Footpad with Turn Down Corners
6. 7° Angled & Adjustable Legs
7. Safety Side Traction Strip



EXCLUSIVE  
FEATURE:  
7° Angled  
Legs

Through our rigorous testing, we have developed the Heavy Duty Series for medium to large lakes that experience heavy wave conditions. Our technology ensures our docks will last where others won't dare to venture.

- Triple chambered frames that increase the strength and torsional rigidity of the dock, helping to resist flex caused by heavy wave action and mooring large watercraft to the dock
- Internal Sliding Connectors and industrial strength knob brackets connect your docks together with incredible ease
- **Patented 7° Adjustable Angled Legs provide** structurally proven stance for an incredibly stable and comfortable dock, even in rough water conditions
- Our DeckWave® decking allows wave action to be dispersed through the vented decking and the slide in/out track ensures that your panels do not blow out

## HEAVY DUTY

Size	Ramp Includes Frame & Decking	Self Standing Includes Frame, Decking, 4-Leg Assemblies and Hardware	Add End Includes Frame, Decking, 2-Leg Assemblies and Hardware	Add Side Includes Frame, Decking, 2-Leg Assemblies and Hardware	Add Back/Side (L/R) Includes Frame, Decking, 1-Leg Assembly and Hardware	Notched End Cap	End Cap <small>Required on Open Ends of Dock Frame</small>
4 x 10	\$2,431	\$3,407	\$3,008	\$2,993	\$2,951	\$147	\$116
4 x 12	\$2,951	\$3,927	\$3,528	\$3,512	\$3,470	\$147	\$116
4 x 14	\$3,381	\$4,358	\$3,959	\$3,943	\$3,901	\$147	\$116
6 x 10	\$3,203	\$4,179	\$3,780	\$3,764	\$3,722	\$158	\$126
6 x 12	\$3,885	\$4,862	\$4,463	\$4,447	\$4,405	\$158	\$126
6 x 14	\$4,547	\$5,523	\$5,124	\$5,108	\$5,066	\$158	\$126
8 x 10	\$5,099	\$6,075	\$5,676	\$5,661	\$5,619	\$168	\$137
8 x 12	\$6,191	\$7,167	\$6,768	\$6,753	\$6,711	\$168	\$137
8 x 14	\$7,105	\$8,082	\$7,683	\$7,667	\$7,625	\$168	\$137

Pipe legs sold in 6" increments - 1.9" OD, ½ schedule 40 = \$11.00/ft. or 1.9" OD schedule 80 = \$16.50/ft, Tri-Rib = \$16.50/ft.

NOTE: Schedule 80 or Tri-Rib pipe is recommended for pipe lengths of 7ft or more.

Our internal sliding frame connectors and knob brackets add additional strength and make assembly easy!



### Mud Pads - \$90



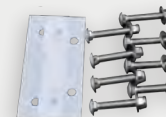
Prevent pipe legs from sinking in muddy or silty lake bottoms where 6" of sinking is possible.

### HD Duty Hinge - \$100



Used when a slope is required.

### Hinge Hardware - \$25

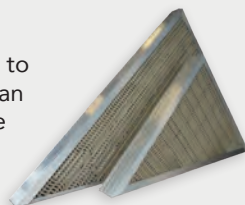


Used when a slope is required.

### Shore Mount Bracket - \$55



Connecting your dock to shore, a break wall or an existing dock structure is easy with our shore mounting bracket.



### Heavy Duty Inside Corner

Enhance the appearance of your dock by adding up to 18 sq.ft. of space.

4' x 4' - \$1,225  
6' x 6' - \$1,450



### Flip Up Dock Cleats from \$35

Eliminate trip hazards with these sleek looking cleats that flip up for mooring watercraft and flip down when not in use. See accessories for options.



# SUPER DUTY MODULAR PIPE SERIES

DOCKINABOX.COM

## INNOVATIVE DESIGN. PATENTED TECHNOLOGY.

The Super Duty Pipe Series is designed to go where no other docks can.

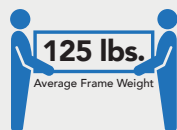
Unlike anything made in the consumer market today, the Super Duty Series is reliable in the harshest of conditions and able to accommodate watercraft and cruisers up to 50 ft. long. Ideal for large exposed and open bodies of water like the Great Lakes and perfect for select residential, commercial and marina use.

Our Super Duty Series comes equipped with our DeckWave® decking which allows 40% of wave energy to be dispersed, reducing decking blow outs and damage. You can choose the colour of your decking which is included, as are the leg stations, connecting brackets, foot pads and hardware in accordance with your chosen configuration.

Our DockinaBox® sections can be attached together with our exclusive sliding connector bracket system that allows for endless design options.



### FEATURES

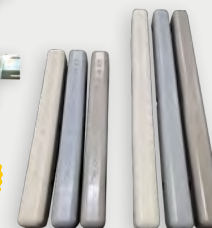


DECK WAVE



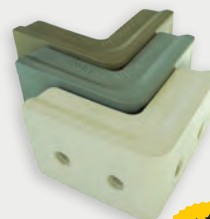
#### Rough Water Hold Down Kit - \$185

Keep your dock firmly planted to the lake bottom in rough conditions. Includes 245 lb. anchor, 6' chain and hardware bracket.



#### Vertical Sliding Bumpers from \$210

These exclusive bumpers protect your vessel & dock regardless of water level heights. Horizontal & vertical adjustability. Available in 30" or 42" lengths.



#### Designer Corner Bumpers - \$100

DockinaBox® exclusive design that protects your watercraft and swimmers as well. Our bumper covers top, side and bottom of the dock.



#### Telescopic Cross Brace - \$165

Optional telescopic cross braces add increased stability in deeper water conditions of 6 ft. or more.



# CUTTING EDGE TECHNOLOGY. UNIQUE DESIGNS.

MADE IN CANADA

SUPER DUTY PIPE DOCK

1. Triple Chambered Frame
2. Unique 9° Angled Leg Stanchions
3. Additional Lake Bottom Anchoring
4. Oversized Foot pad with Turn Down Corners



★★★★★  
**EXCLUSIVE  
FEATURE:**  
9° Angled  
Legs

The Super Duty Series is made to survive in large open bodies of water or for light commercial use. We use our patented technology and punishing tests to ensure our Super Duty docks are a better solution for large bodies of water.

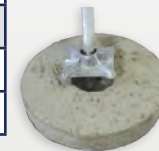
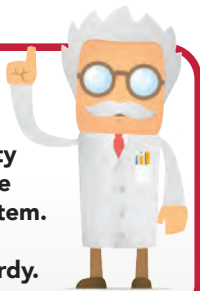
- Triple chambered frames that increase the strength and torsional rigidity of the dock, resisting flexing caused by heavy wave action and mooring large watercraft to the dock
- All docks welded with CMT technology
- 9° Adjustable Angled Legs, double braced with built in gusseted stabilizers to provide unparalleled strength and unrivaled stability
- Internal Sliding Connectors and industrial strength knob brackets connect your docks together with incredible ease and provide you with exceptional strength & rigidity

## SUPER DUTY

Size	Ramp Includes Frame & Decking	Self Standing Includes Frame, Decking, 4-Leg Assemblies and Hardware	Add End Includes Frame, Decking, 2-Leg Assemblies and Hardware	Add Side Includes Frame, Decking, 2-Leg Assemblies and Hardware	Add Back/Side (L/R) Includes Frame, Decking, 1-Leg Assembly and Hardware	Notched End Cap	End Cap <small>Required on Open Ends of Dock Frame</small>
4 x 10	\$2,736	\$3,855	\$3,398	\$3,880	\$3,620	\$142	\$121
4 x 14	\$3,806	\$4,925	\$4,468	\$4,950	\$4,690	\$142	\$121
6 x 10	\$3,591	\$4,841	\$4,318	\$4,862	\$4,539	\$152	\$131
6 x 14	\$5,101	\$6,350	\$5,828	\$6,371	\$6,049	\$152	\$131
8 x 10	\$5,752	\$7,322	\$6,639	\$7,343	\$6,860	\$163	\$142
8 x 14	\$8,014	\$9,583	\$8,901	\$9,604	\$9,121	\$163	\$142

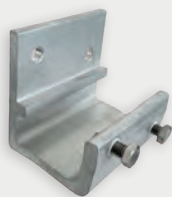
Pipe legs sold in 6" increments - 2.375" OD 2" Schedule 40 = \$15.50/ft. 2.375" OD 2" Schedule 80 = \$21.00/ft.

**Built without  
compromise,  
the Super Duty  
Series is unlike  
any other system.  
Robust and  
incredibly sturdy.**



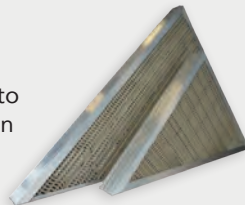
**Mud Pads - \$90**

Prevent pipe legs from sinking in muddy or silty lake bottoms where 6" of sinking is possible.



**Shore Mount  
Bracket - \$55**

Connecting your dock to shore, a break wall or an existing dock structure is easy with our shore mounting bracket.



**Super Duty  
Inside Corner**

Enhance the appearance of your dock by adding up to 18 sq.ft. of space.

**4' x 4' - \$1,325  
6' x 6' - \$1,650**



**Flip Up Dock  
Cleats from \$35**

Eliminate trip hazards with these sleek looking cleats that flip up for mooring watercraft and flip down when not in use. See accessories for options.



**Super Duty Hinge - \$105**

**Hinge Hardware - \$25**



# FLOATING DOCKS STANDARD SERIES

DOCKINABOX.COM

## FOR SOFT LAKE BEDS OR DEEP WATER.

Able to accommodate boats up to 25 feet and ideally suited for smaller lakes where waves are under 2 ft. and not subjected to harsh conditions.

Our Standard Duty Floating series features our 100% recyclable plastic Eco Floats featuring foam wall thickness up to 1" and no Styrofoam. Eliminating water lodged floats. The Standard Duty Floating series features a lower freeboard of 13" and are more applicable for water crafts, small boats and non-motorized lakes.

Each section is designed for approx. 26 lbs. plus per sq. ft. of buoyancy.

All Standard Duty Floating Dock series are compatible with accessories optional on the Heavy Duty series and built with the unique features of the Heavy Duty line.

For a Larger Patio area, 2 sections of Floating dock can be locked together with our unique locking hinges.

### STANDARD FLOATING DOCK 13" FREE BOARD

### END CAPS End Caps to be added at end of Each Dock section

Size	Semi Floating Ramp	Semi Floating H-Wall	Floating Section	Floating-H-Wall	Notched for Hinges	Without Notch
4' x 10'	\$2,580	\$2,449	\$3,017	\$2,754	\$137	\$110
4' x 12'	\$3,038	\$2,906	\$3,474	\$3,212	\$137	\$110
4' x 14'	\$3,701	\$3,502	\$4,296	\$3,897	\$137	\$110
4' x 16'	\$4,023	\$3,823	\$4,618	\$4,218	\$137	\$110
4' x 20'	\$4,890	\$4,690	\$5,921	\$5,391	\$137	\$110
6' x 10'	\$3,710	\$3,494	\$4,375	\$3,945	\$147	\$121
6' x 12'	\$4,449	\$4,234	\$5,115	\$4,684	\$147	\$121
6' x 14'	\$4,912	\$4,697	\$5,993	\$5,468	\$147	\$121
6' x 16'	\$5,563	\$5,348	\$7,275	\$6,476	\$147	\$121
6' x 20'	\$6,830	\$6,615	\$8,370	\$7,643	\$147	\$121
8' x 10'	\$4,893	\$4,631	\$5,767	\$5,242	\$158	\$131
8' x 12'	\$5,824	\$5,562	\$6,698	\$6,173	\$158	\$131
8' x 14'	\$6,811	\$6,412	\$8,000	\$7,202	\$158	\$131
8' x 16'	\$7,775	\$7,376	\$8,964	\$8,165	\$158	\$131
8' x 20'	\$9,308	\$8,909	\$11,370	\$10,310	\$158	\$131

Floating Docks can be combined with Pipe Series Docks.

Note: All ramps 14', 16' & 20' have option of a built-in cable cross at \$295.



### Anchor Kits from \$245

Over 254 lbs. of concrete includes shock absorber, frame bracket, shackle and chain connector. Chain is available at a separate cost.

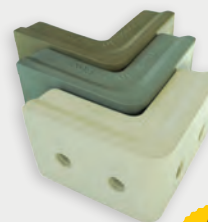
Side Mount

End Mount



### Vertical Sliding Bumpers from \$180

These exclusive bumpers protect your vessel and dock regardless of water level heights. Horizontal & vertical adjustability. Available in 30" or 42" lengths.



### Designer Corner Bumpers - \$95

DockInABOX® exclusive design that protects your watercraft and swimmers as well. Our bumper covers top and side of the dock.



### Flip Up Dock Cleats from \$35

Eliminate trip hazards with these sleek looking cleats that flip up for mooring watercraft and flip down when not in use. See accessories for options.



# STANDARD DUTY FLOATING DOCK

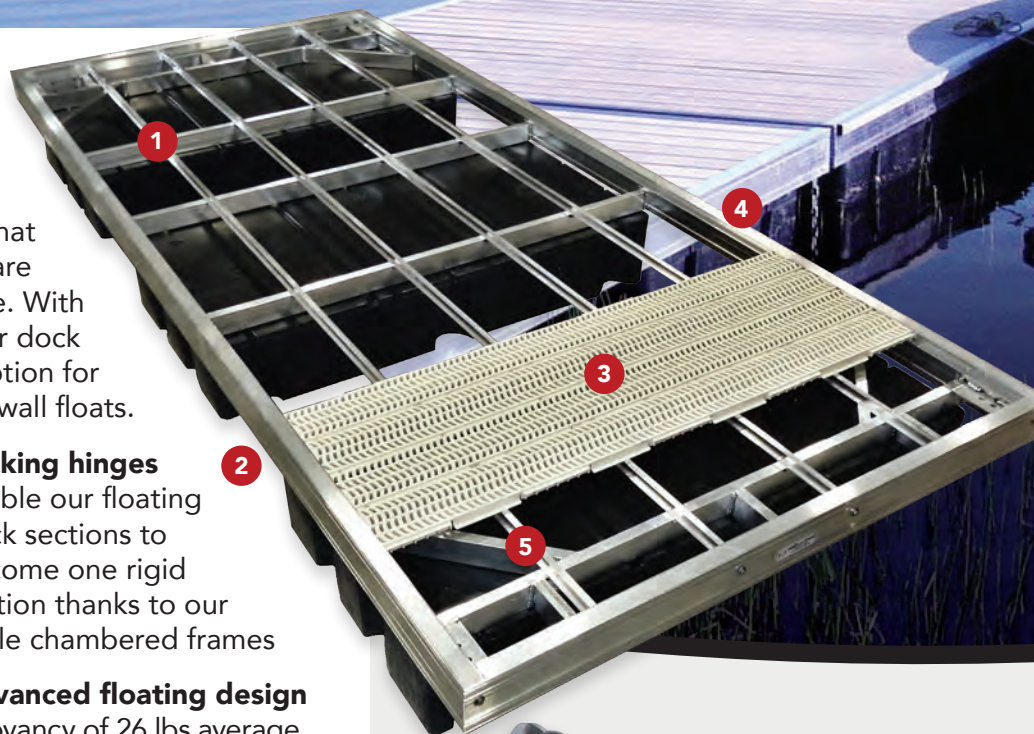
MADE IN CANADA

STANDARD DUTY FLOATING DOCK

DockinaBox® floating systems are manufactured with the strongest substructure in the industry. Our superior design increases buoyancy and provides maximum stability so that corner dips are reduced. Our floats are 100% recyclable and Canadian made. With chains and our shock absorbers, your dock will be more stable than the rest. Option for either the ECO floats or our ECO H-wall floats.

- **Double braced frame at the hinge points** to eliminate frame racking and flexing, ultimately increasing the life expectancy of the dock
- **Plastic insulators** are used when stainless steel touches aluminum
- **Multi Chambered Frame extrusions** increases the load strength and rigidity of the dock for stability, comfort and safety
- The **traction safety strip** used on the top edge surface of the frame ensure safe ingress and egress
- **Locking hinges** enable our floating dock sections to become one rigid section thanks to our triple chambered frames
- **Advanced floating design** Buoyancy of 26 lbs.average helps to eliminate dock corners dipping when stood on. Our float design also creates and optimizes ice lifting characteristics for when the water freezes in the winter.
- All docks welded with **CMT technology**

Each floating section is designed with over 26lbs./sq.ft. of buoyancy - significantly higher than other manufacturers. You'll feel less shaky compared to other systems on the market.



1. Decking supports spaced 16" or less
2. Evenly spaced floats to reduce drag in currents and allow flow through
3. DeckWave® with slide in track
4. Dual Chambered Frame
5. Double Braced frame and gusset to eliminate flex



**Standard Duty Hinge - \$100**  
**Mounting Hdwr - \$25**

1/4" thick laser cut **stainless steel**, includes pin, clip, plate and hardware.



**Chain Connector - \$65 incl. Mounting Hwdr.**

Heavy-Duty **stainless steel** Anchor Brackets to be used for all floating dock applications and are stronger than regular steel.



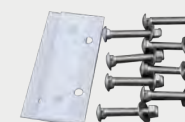
**Filler Strip - \$30/ft.**

Used to cover the locking hinges and create a seamless and safe platform when joining our floating docks together.



**Locking Hinge - \$115**  
**Mounting Hdwr - \$25**

1/4" thick laser cut **stainless steel**, used to lock floating dock sections together. 25% Stronger than regular steel hinges.



**Optional Ramp Cable Cross - \$295**



# HEAVY DUTY FLOATING DOCK

DOCKINABOX.COM

## FOR SOFT LAKE BEDS OR DEEP WATER

Able to accommodate boats up to 30 feet or more and ideal for residential or light commercial use.

Our HD-Floating Series of docks features heavy duty 100% polyethylene plastic Eco floats that feature heavier foam walls up to 1" thick and no Styrofoam inside for superior durability. **Discarding waterlogged Floats are be a thing of the past!**

Our **HD Floating Dock Series** is used in deep water situations where pipe docks cannot extend or in lake situations where the bottom is too soft and silty to support pipe dock feet, or where water variations are over two feet.

This series is fast and easy to install, and we have worked to ensure that our floating docks are so stable that the corner dips are minimized when standing at the corner of your dock.

Our **HD Floating Dock; Low-Profile Series** is used specifically for applications where a low freeboard is required. At only 8" above water these Docks are perfect for camps, paddle boards, kayaks, rowing boats, non-motorized lakes, dragon boats, canoes and commercial use for special low-profile requirements. These docks also features the Eco Floats.



HD FLOATING DOCKS 15" FREE BOARD					LOW PRO HD FLOATING DOCKS 8" FREE BOARD		END CAPS End Caps to be added at end of Each Dock section	
Size	Semi Floating Ramp	Semi Floating H-Wall	Floating Section	Floating- H-Wall	Semi Floating Ramp	Floating Section	Notched for Hing- es	Without Notch
4' x 10'	\$2,861	\$2,730	\$3,298	\$3,036	\$2,872	\$3,319	\$147	\$116
4' x 12'	\$3,369	\$3,238	\$3,806	\$3,544	n/a	n/a	n/a	n/a
4' x 14'	\$3,981	\$3,781	\$4,575	\$4,176	\$3,835	\$4,728	\$147	\$116
4' x 16'	\$4,464	\$4,264	\$5,495	\$4,964	n/a	n/a	n/a	n/a
4' x 20'	\$5,430	\$5,230	\$6,618	\$6,020	\$5,283	\$6,625	\$147	\$116
4' x 24'	\$6,395	\$6,195	\$7,862	\$7,201	\$6,249	\$8,037	\$147	\$116
4' x 28'	n/a	n/a	\$9,261	\$8,468	n/a	\$9,550	\$147	\$116
6' x 10'	\$4,123	\$3,908	\$4,789	\$4,359	\$3,943	\$4,956	\$158	\$126
6' x 12'	\$4,940	\$4,725	\$5,606	\$5,175	n/a	n/a	n/a	n/a
6' x 14'	\$5,457	\$5,284	\$6,538	\$6,013	\$5,292	\$6,785	\$158	\$126
6' x 16'	\$6,210	\$5,994	\$7,541	\$6,895	n/a	n/a	n/a	n/a
6' x 20'	\$7,588	\$7,373	\$9,585	\$8,724	\$7,425	\$9,916	\$158	\$126
6' x 24'	\$8,999	\$8,783	\$11,661	\$10,585	\$8,836	\$11,283	\$158	\$126
6' x 28'	n/a	n/a	\$12,983	\$11,692	n/a	\$13,648	\$158	\$126
8' x 10'	\$5,340	\$5,078	\$6,214	\$5,689	\$5,361	\$6,256	\$168	\$137
8' x 12'	\$6,224	\$5,962	\$7,098	\$6,573	n/a	n/a	n/a	n/a
8' x 14'	\$7,204	\$7,005	\$8,592	\$7,794	\$7,110	\$8,898	\$168	\$137
8' x 16'	\$8,311	\$7,913	\$10,059	\$9,135	n/a	n/a	n/a	n/a
8' x 20'	\$10,104	\$9,705	\$12,481	\$11,284	\$9,810	\$12,494	\$168	\$137
8' x 24'	\$11,962	\$11,563	\$15,141	\$13,829	\$11,668	\$15,246	\$168	\$137
8' x 28'	n/a	n/a	\$16,725	\$15,129	n/a	\$17,338	\$168	\$137

Floating Docks can be combined with Pipe Series Docks.  
Note: All ramps 14' to 24' have the option of a built-in cable cross at \$295

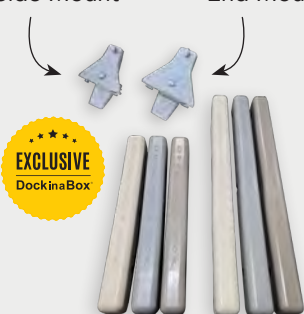


### Anchor Kits from \$245

Over 245 lbs. of concrete includes shock absorber, frame bracket, shackle and chain connector. Chain is available at a separate cost of \$5.95/ft.

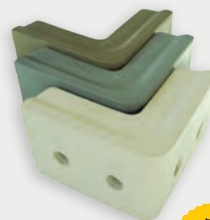
Side Mount

End Mount



### Vertical Sliding Bumpers from \$185

These exclusive bumpers protect your vessel and dock regardless of water level heights. Horizontal & vertical adjustability. Available in 30" or 42" lengths.



### Designer Corner Bumpers - \$95

DockinaBox® exclusive design that protects your watercraft and swimmers as well. Our bumper covers top and side of the dock.



### Flip Up Dock Cleats from \$35

Eliminate trip hazards with these sleek looking cleats that flip up for mooring watercraft and flip down when not in use. See accessories for options.



# HEAVY DUTY FLOATING DOCK

MADE IN CANADA

HEAVY DUTY FLOATING DOCK

DockinaBox® floating systems are manufactured with the strongest substructure in the industry. Our superior design increases buoyancy and provides maximum stability so that corner dips are reduced. Our floats are 100% recyclable and Canadian made. With chains and our shock absorbers, your dock will be more stable than the rest. Option for either the ECO floats or our ECO H-wall floats.

- **Double braced frame at the hinge points** to eliminate frame racking and flexing, ultimately increasing the life expectancy of the dock

- **Plastic insulators** are used when stainless steel touches aluminum

- **Multi Chambered Frame extrusions** increases the load strength and rigidity of the dock for stability, comfort and safety

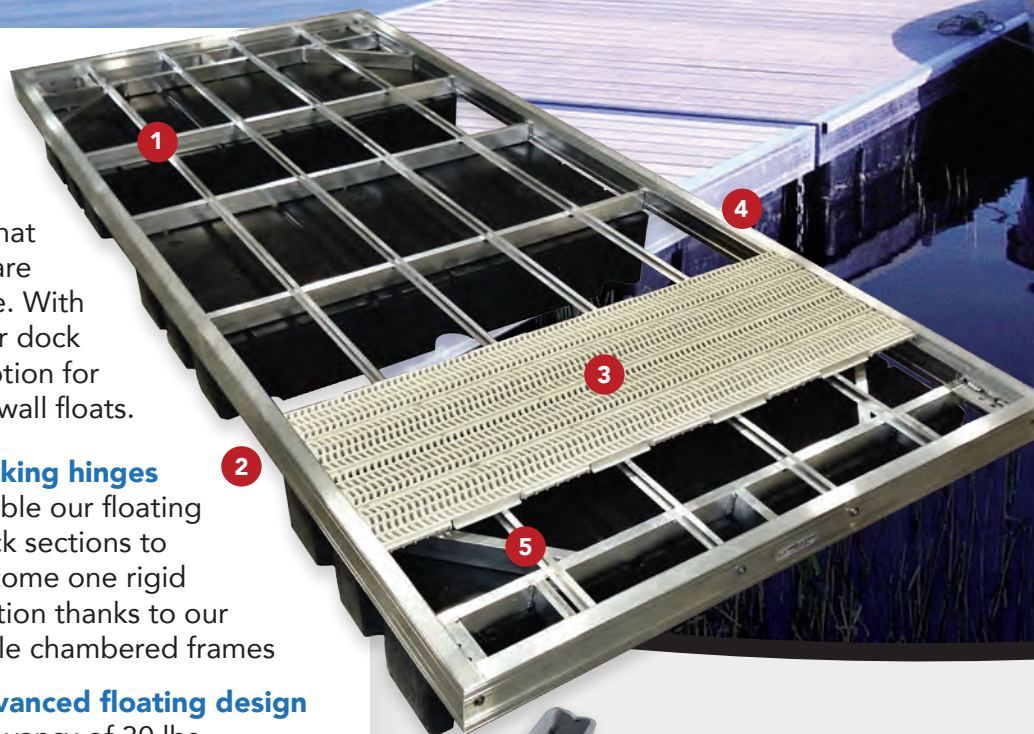
- The **traction safety strip** used on the top edge surface of the frame ensure safe ingress and egress

- **Locking hinges** enable our floating dock sections to become one rigid section thanks to our triple chambered frames

- **Advanced floating design** Buoyancy of 30 lbs. average helps to eliminate dock corners dipping when stood on. Our float design also creates and optimizes ice lifting characteristics for when the water freezes in the winter

- All docks welded with **CMT technology**

Each floating section is designed with over 30 lbs./sq.ft. of buoyancy - significantly higher than other manufacturers. You'll feel less shaky compared to other systems on the market.



1. Decking supports spaced 16" or less
2. Evenly spaced floats to reduce drag in currents and allow flow through
3. DeckWave® with slide in track
4. Triple Chambered Frame
5. Double Braced frame and gusset to eliminate flex



**Heavy Duty Hinge - \$105**  
**Mounting Hwdr - \$20**

1/4" thick laser cut **stainless steel**, includes pin, clip, plate and hardware.



**Chain Connector - \$65 incl. Mounting Hwdr.**

Heavy-Duty **stainless steel** Anchor Brackets to be used for all floating dock applications and are stronger than regular steel.



**Filler Strip - \$30/ft.**

Used to cover the locking hinges and create a seamless and safe platform when joining our floating docks together.



**HD Locking Hinge - \$120**  
**Mounting Hwdr - \$20**

1/4" thick laser cut **stainless steel**, used to lock floating dock sections together. 25% Stronger than regular steel hinges.

**Optional Ramp Cable Cross - \$295**

Our 6' x 20' Floating Dock can support up to 20 adults without getting your feet wet even on our Low Pro Series.



# TOWER AND TOWERLESS SERIES

DOCKINABOX.COM

## Tower Docks in Lengths up to 54 Ft.

Our unique tower arch recesses into the frame so it is hidden during the summer months. When the tower is pulled up from the shore, each section of the dock is lifted up from the arch. The easy lowering and raising system saves annual dock installation and removal costs, making it a one person job.



Tower Dock Shown

## Towerless One Piece Frame for Lengths up to 28 Ft.

Our towerless docks offer a unique advantage over our tower docks. Utilizing the shoreline, a simple cable can be attached to a high point (hilltop, tree or pole) to lift the dock out of the water. A gin pole can also be integrated into the dock if there is not a high enough point to lift the dock.



Tower Dock Shown & Towerless in the Background

## SUPER DUTY TOWER Series

4' x 24'	\$9,335	6' x 24'	\$11,315	8' x 24'	\$13,585
4' x 34'	\$13,435	6' x 34'	\$16,235	8' x 34'	\$19,565
4' x 44'	\$17,705	6' x 44'	\$21,165	8' x 44'	\$25,685
4' x 54'	\$20,635	6' x 54'	\$26,215	8' x 54'	\$31,805

## HEAVY DUTY TOWERLESS Series for 4' Waves

4' x 20'	\$5,995	6' x 20'	\$7,050	8' x 20'	\$8,785
4' x 24'	\$7,195	6' x 24'	\$8,455	8' x 24'	\$10,575
4' x 28'	\$8,395	6' x 28'	\$9,855	8' x 28'	\$12,315

## SUPER DUTY TOWERLESS Series for 5' Waves

4' x 20'	\$7,455	6' x 20'	\$8,785	8' x 20'	\$10,395
4' x 24'	\$8,915	6' x 24'	\$10,515	8' x 24'	\$12,245
4' x 28'	\$10,915	6' x 28'	\$12,565	8' x 28'	\$14,665

All pricing includes DeckWave® decking.  
Pipes, installation and shore work are extra.  
Tower winch and hardware kits from \$1,225.  
Optional walkway - \$30/ft.

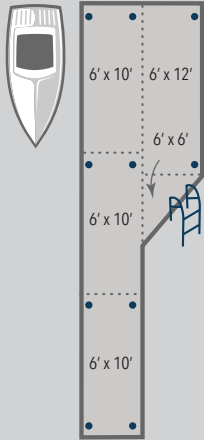


# MODULAR DESIGN

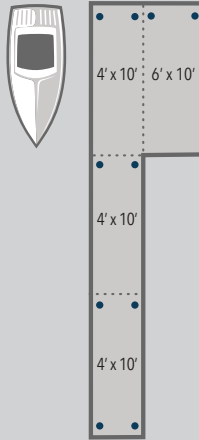
# PIPE DOCKS

MADE IN CANADA

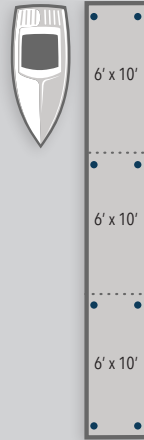
**DESIGN 1**  
Most Desirable



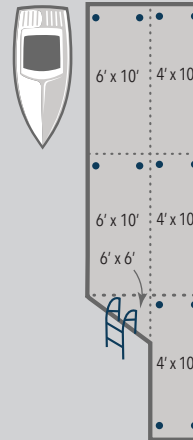
**DESIGN 2**  
Cost Effective  
Side Patio



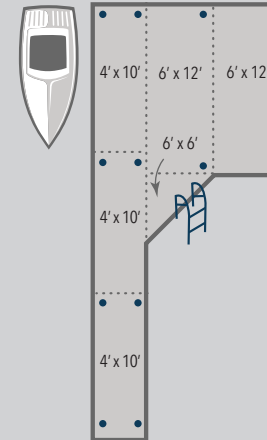
**DESIGN 3**  
Straight Out



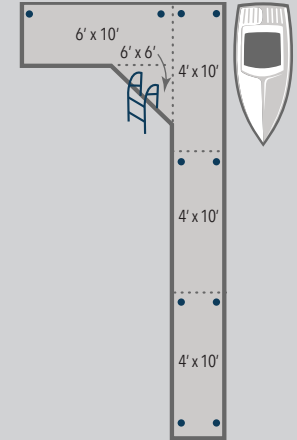
**DESIGN 4**  
Long Patio  
good for boats



**DESIGN 5**  
Large Seating Area  
multi-purpose

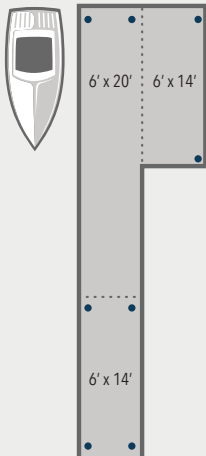


**DESIGN 6**  
Narrow Seating Area  
to left

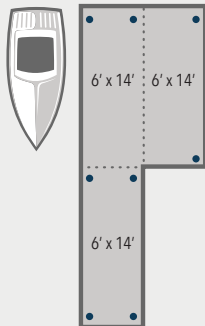


# FLOATING DOCKS

**DESIGN 1**  
Most Desirable



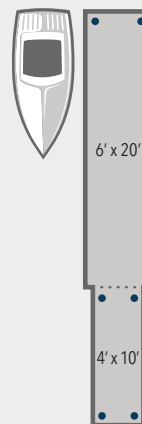
**DESIGN 2**  
Cost Effective  
Side Patio



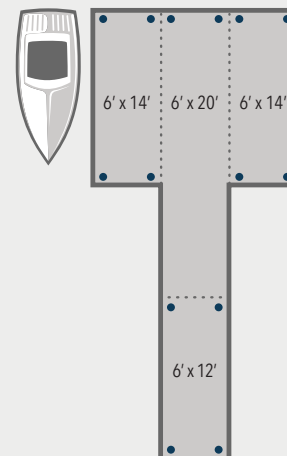
**DESIGN 3**  
Straight Out



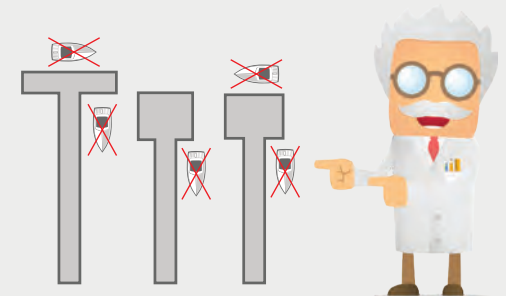
**DESIGN 4**  
Long Patio  
good for boats



**DESIGN 5**  
Large Seating Area  
multi-purpose



Often considered but rarely used, since wave propagation is toward the shore, these designs make it very difficult to park on the inside of the patio area, on the end will push the boat continuously against the dock.





# LIFT 'N LOCK

DOCKINABOX.COM

## PWC & ALUMINIUM BOAT CANTILEVERED LIFTS

The Lift 'N Lock PWC lift series is exclusive to DockinaBox® and designed for PWC and small watercrafts up to 15ft. These lifts feature dual position winches, heavy wall tubing at pivot points, mechanical lock in the UP position, up to 50" lift height (1250 Series), anti-theft lock location for enhanced security, interchangeable winch post locations for ultimate convenience, fully welded frames, standard adjustable 18" legs and vinyl covered bunks with angled down entry. Various options and accessories available.

## LIFT 'N LOCK PRICING

Model	LL1100	LL1250	LL1250W
30" Powder Coated Hand Wheel	\$2,825	\$3,215	\$3,655
AC Electric Switch Control	\$3,695	\$4,100	\$4,635
AC Electric Remote Control	\$4,280	\$4,675	\$5,115
DC Electric RC w/Panel, Controller & Box	\$4,480	\$4,875	\$5,315

Battery Not Included

1. Optional Adjustable Bow Stop
2. Vinyl & Aluminum Ultra Bunks
3. Optional Board Assist Platform
4. Adjustable Legs
5. Heavy Wall Pivot Points
6. Secure Stop with lock point

Winch Post  
Extension  
Option

## SPECIFICATIONS

Model	LL1100	LL1250	LL1250W
Capacity	1100 lbs.	1250 lbs.	1250 lbs.
Lift Height	40"	50"	50"
Length	77"	96"	96"
Bulk Length	65"	7.5"	9.5"
Max Beam	60"	72"	84"
Height	80"	87"	87"
Adjustable Legs	18" Std	18" Std	18" Std

## LIFT 'N LOCK OPTIONS

Adjustable Bow Stop	\$385
Board Assist Platform	LL1100 Series - \$340 LL1250 Series - \$360
36" Legs Upgrade	Upgrade \$70/pair or Non-upgrade \$195/pair
18" Winch Extension	All LL Series - \$110

Welded components and custom engineering makes Lift 'N Lock the best PWC lift on the market!



# KAYAK LAUNCHER

MADE IN CANADA

LIFT & LOCK / KAYAK LAUNCHER

## KAYAK LAUNCHER



### Features:

- Available in AC Remote Control
- Raise and lowers up to 300 lbs.
- Can Stop in any height position up or down
- 5 telescopic height positions, 28", 31", 34", 37", 40"
- Comes with Marine grade stainless steel actuators
- Adjustable bunks to suit most kayaks, canoes or paddleboard.

Optional Side Grab Handle available for easier boarding or push, pull on & off action. \$200

AC Power - \$3,995

Exclusive product: For DockinaBox® dock systems only.  
Hold Down Kit required under Dock section - \$185



Down Position



# VERTICAL BOAT LIFTS

DOCKINABOX.COM

## Small to Large Vertical Boat Lifts

Vertical Lifts (VL) have an open structural design that allows easy access to your boat from both sides of the lift while the boat is in the water. VL platforms are designed to descend, lower and lift higher than the competition systems. This versatile range allows the same lift to be used for both shallow and deep water applications, as well as in areas with fluctuating water levels. Constructed of marine grade aluminum in various weight classes, manual or remote control with either AC or DC electric power drives. Sunbrella® canopies are optional. Some models are available in 80" lift height.



Model	Capacity / Beam	Lift height	Main Water Depth	Weight	Bunks	Manual Winch	Remote Electric	Optional Guides
VL1250	1,250 lbs. / 65"	75"	8.5"	233lbs	Wood / Carpet	\$4,975	\$6,150	Wood / Carpet - \$565
VL16065	1,600 lbs. / 65"	68"	9"	415lbs	Wood / Carpet	\$6,450	\$7,650	9.5' UltraGuide-In® - \$1,025
VL20100	2,000 lbs / 100"	68"	9"	440lbs	9.5' UltraBunk®	\$7,575	\$8,775	9.5' UltraGuide-In® - \$1,095
VL35116	3,500 lbs. / 116"	68"	8"	505lbs	12.5' UltraBunk®	\$9,455	\$11,200	12.5' UltraGuide-In® - \$1,295
VL45116	4,500 lbs. / 116"	68" *	8"	507lbs	12.5' UltraBunk®	\$11,200	\$12,575	12.5' UltraGuide-In® - \$1,295
VL50124	5,000 lbs. / 124"	68" *	9"	583lbs	12.5' UltraBunk®	\$11,750	\$13,050	12.5' UltraGuide-In® - \$1,395
VL60124	6,000 lbs. / 124"	68" *	9"	643lbs	12.5' UltraBunk®	\$12,750	\$14,050	12.5' UltraGuide-In® - \$1,395
VL80124T	8,000 lbs. / 124"	78"	11"	860lbs	12.5' UltraBunk®	N/A	\$19,850	12.5' UltraGuide-In® - \$1,495
VL10132	10,000 lbs. / 132"	78"	13"	1217lbs	Wood / Carpet	N/A	\$28,950	Wood / Carpet - \$1,895

\* Tall 80" Lifting Height available & DC with Solar Panel in 12 & 24 Volt also available





### ULTRABUNK®

Long lasting aluminum vinyl UltraBunk® can be adjusted up or down, from bow to stern and towed in or out to better fit almost any boat lift application.

PWC 6.5'L	from \$750/pair
PWC 7.5'L	from \$850/pair
Boat Lifts 9.5'L	from \$1,135/pair
Boat Lifts 12.5'L	from \$1,395/pair



### ULTRAGUIDE-IN®

Safely guide your boat into your lift with our aluminum and vinyl UltraGuide-In®. Designed to provide a walkway to walkaround or board your vessel.

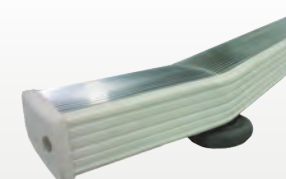
Ultra Guide-In® 9.5'L	from \$1,095/pair
HD Ultra Guide-In® 12.5'L	from \$1,395/pair



### ULTRAGUIDE-IN®

#### ROLL-In Kit

Roll In Wheel Kit	from \$145/pair
-------------------	-----------------





# VERTICAL SIDE LIFTS

## PWC LIFT FOR PERMANENT DOCKS AND PIERS

The vertical side lift is ideal for keeping your PWC safety stored on permanent structures like crib docks or break walls. The lift's clean lines and simplicity of design make it nearly invisible when in use with a total lift height of 72".



- 1. Optional AC Remote Control Electric Winch for quick and smooth operations
- 2. Flexible Mount allows for precise height setting
- 3. Stainless steel cables ensure years of reliability
- 4. Premium rollers and sheaves ensure reliable operation for years
- 5. Ultrabunk® with non-marking and non-slip aluminum vinyl, supports and protects the hull
- 6. Adjustable Bow Stop



Drop Carriage Arms

Capacity (lbs)	Lift Height	Arm Length	Bunk Length	Switched AC Electric	Switched AC Remote	Remote Control Solar Battery Pack	Weight (lbs)
VSL 1100	72"	42"	6.5'	\$4,050	\$4,925	\$5,495	275
VSL 1500	72"	52"	7.5'	\$4,350	\$5,225	\$5,795	295
VSL OPTIONS	Drop Carriage Arms; Substituted as an Upgrade					42" - \$245	52" - \$290
	Side Boarding Platform with Brackets & Hardware					60" - \$365	



EXCLUSIVE  
DockinaBox

Includes Telescopic Bow Stop for PWC positioning.



# HYROLLER BOAT LIFT & MARINE RAILS

MADE IN CANADA

HYDRAULIC BOAT LIFTS



## Hyroller Boat Lift

The HyRoller Boat Lift series is a step into the future. Having features and benefits like no other boat lift on the market. Designed to be left in the water for the winter or self-floated to deep water. Our lifts "sleep" or hibernate under the ice. In the Spring, just raise it and reconnect. Removals and Reinstallation could be a thing of the past. A unique feature is that this lift goes lower than any other lift at 5.5" plus boat draft. With a 4 bunk system, integrated walkway, side guides and underwater lighting, this lift has everything you want with built in features or options.

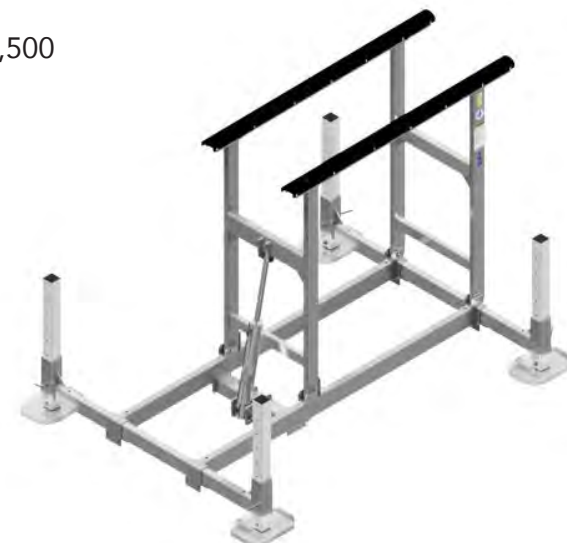
Model	# of Cylinders	Capacity (lbs.)	Lift Range (ft)	Minimum Height (in)	Bunk Lengths (ft.)	Weight (lbs)	Price
HL7K6	2	7,000	6	5.5	4 @ 12ft	1,300	\$25,245
HL8K5	2	8,000	5	5.5	4 @ 12ft	1,240	\$25,025
HL9K6	2	9,000	6	5.5	4 @ 14ft	1,460	\$28,950
HL10K5	2	10,000	5	5.5	4 @ 14ft	1,400	\$28,650
Options: Spring Loaded Vertical Side Guides (pr.) - \$ 1,250							
High Output Underwater Remote Control Light (pr.) - \$1,495							

## Hydraulic PWC & Jet Ski Lift Hydraulic Mini

Lifts Jet Skis, PWCs and Small Boats up to 2,000 lbs.

This hydraulic jet ski lift is one of our most sought-after products. The redesigned lift operates with a single hydraulic cylinder for improved simplicity and ease of use. With a streamlined design and fast, easy operation, you won't waste a moment. Built with high-quality Marine Grade Aluminum, this free-standing PWC boat lift is built to last. Easy to assemble and adjust, the Hydraulic jet ski lift will have you on the water in seconds with effortless operation and ultimate protection.

\$10,500





# HYDRAULIC LIFTS

DOCKINABOX.COM



## Hydraulic Lifts

Hydraulic Lifts are available in 2000 to 12,000 lbs capacities in either 48" to 72" lifting heights. Quiet and fast with a less visible design than typical lifts make this a great unit for an unobstructed view of the lake. Includes complete solar power pack &, charge controller. Batteries excluded.

Model	FLEX Adjustable Width	Maximum Weight Capacity	Maximum Beam Length	Maximum Lifting Height	Weight	Price incl. HL Box & 3 legs
HL20058-48	n/a	2,000 lbs.	58"	48"	215 lbs.	\$11,945
HL20065-48	n/a	2,000 lbs.	65"	48"	225 lbs.	\$11,945
HL20065-60	n/a	2,000 lbs.	65"	60"	235 lbs.	\$11,995
HLF60120-48	FLEX	6,000 lbs.	120"	48"	690 lbs.	\$19,858
HLF60120-60	FLEX	5,500 lbs.	120"	60"	710 lbs.	\$19,915
HLF60120-72	FLEX	4,000 lbs.	120"	72"	730 lbs.	\$19,965
HLF70120-48	FLEX	8,000 lbs.	120"	48"	720 lbs.	\$22,095
HLF70120-60	FLEX	74,000 lbs.	120"	60"	740 lbs.	\$22,145
HLF70120-72	FLEX	5,000 lbs.	120"	72"	740 lbs.	\$22,145
HLF10120-48	FLEX	8,000 lbs.	120"	72"	970 lbs.	\$28,195
HLF10120-60	FLEX	12,000 lbs.	120"	48"	970 lbs.	\$28,195
HLF10120-72	FLEX	10,000 lbs.	120"	60"	970 lbs.	\$28,195
HLF180144-60	FLEX	18,000 lbs.	144"	60"	n/a	\$46,695
HLF240144-60	FLEX	24,000 lbs.	144"	60"	n/a	\$62,195
HLF360144-60	FLEX	36,000 lbs.	144"	60"	n/a	\$77,295



## RGC Hydraulic Boat Lifts ; 6000 to 36,000 lb. Capacity

### RGC Marine's FLEX Hydraulic Boat Lift include:

- Streamlined, nearly invisible freestanding boat lift design. No need for pilings or a fixed structure thus faster, less expensive installation.
- Sturdy Marine-Grade Aluminum Frames are thicker than competitor frames providing superior strength and wear that stands up to the harshest marine elements. In addition, the welded frame construction requires less maintenance with fewer moving parts, and less hardware to tighten.
- STAINLESS-STEEL BRAIDED HOSES add a layer of protection from abrasion and cutting. These stainless-steel hoses also prevent zebra mussel damage and cutting from fishing line. Standard with all FLEX hydraulic boat lifts.
- Lift Arm Pivots are reinforced with welded bushings reduce wear and provide excellent reliability.
- RGC FLEX Hydraulic Lifts are engineered for peak performance and smoothly lift their maximum rated load to full height effortlessly.
- Eco-friendly biodegradable hydraulic fluid for peace of mind.
- Two remote transmitters give you control from a distance.
- Superior Hydraulic Cylinders built with chrome-plated, stainless-steel shafts and stainless-steel fittings to resist corrosion. Furthermore, metal scrapers remove zebra mussels and other debris which prevents build up and damage and improves longevity. Standard on all RGC FLEX hydraulic boat lifts.
- Hydraulic Control Box provides optimum efficiency. Pump is housed in a water-resistant, lock-ready, fiberglass box and operates with 12V or 24V traditional marine grade lead-acid batteries or AGM batteries.





## Innovative Patent Design: Low Profile with Walkway

Shown in Blue Trim

EXCLUSIVE  
DockinaBox

Shown in Grey Trim



Technically the most advanced drive-on PWC port available on the market.



1. Optional **braking mechanism** prevents the PWC from rolling off the port during rider changes or when in storage - an industry first!
2. **Interchangeable Bow Stop** allows the unit to be configured with the walkway on left or right side
3. **Large stable 13" wide walkway** for convenient boarding and added buoyancy
4. **Air Vent chambers** on all six quadrants of the Port; raise, lower or tilt the port as required
5. Optional **EVA foam padding** adds traction using premium quality hydro turf mats
6. Can be mounted to fixed or floating docks using Belt Hinges or Pole Mount
7. Bow entry roller
8. Roller adjustment from 31" - 33" apart for different hull designs

### SPECIFICATIONS

DockinaPort®	<b>\$3,095</b>
PWC Capacity + 2 People	<b>1,600 lbs.</b>
Length	<b>150 inches</b>
Width	<b>64 inches</b>
Weight	<b>320 lbs.</b>

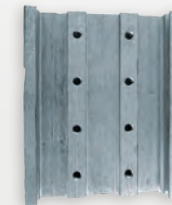
### OPTIONS

EVA Foam Walkway (Blue or Grey)	<b>\$295</b>
Quick Disconnect Plate	<b>\$75/pair</b>
Dual Brake Mechanism	<b>\$325</b>
Belt Hinge (pair)	<b>\$535</b>
Pole Mount 31" (pair)	<b>\$500</b>
Pole Mount 45" (pair)	<b>\$545</b>



#### Pole Mount - Start at \$500

Ideal for mounting to a fixed dock or a breakwall. Available in 31" or 45" heights



Fits most docks.

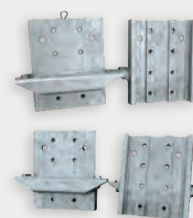
#### Quick Disconnect Plate - \$75

Perfect for easy removal of your DockinaPort® system from your dock. Fits both Pole and Belt Mount.



#### Belt Hinge \$535

For mounting to a floating dock system. Custom applications can be accommodated.



#### Standard & Heavy Duty Brackets for DockinaBox® Docks

Std - \$85  
HD - \$90





## PATENTED LOW PROFILE DESIGN WITH WALKWAY

Years of development have resulted in the production of the most advanced PWC drive on port in the industry. No Styrofoam used in manufacturing process.



- The DockinaPort® is uniquely designed with a low profile
- The right width and length for current and past size watercraft
- Designed to handle either the smallest or the heaviest PWC due to the leveling air chambers
- The one-of-a-kind low profile and industry only adjustable buoyancy chambers gives you the ability to adjust the port easily to any quadrant you wish to raise, lower or tilt in any direction from one or all of the 6 air vents which is a unique exclusive feature
- Add the optional Hydro Turf EVA foam walkway for comfort and safety, a first in the industry exclusive to DockinaBox®
- Mount to the front or the side where you want with our flexible mounting systems depending on whether you have a fixed dock or floating system
- Our **large adjustable rollers are not exposed**, unlike other brands, and can be adjusted for different hull designs
- Easily configured to have the walkway on the left or right side with the **interchangeable bow stop and aft roller**
- An industry leader with a huge 13" wide walkway which provides a convenient boarding platform ideal for rider changes or for putting on a cover great when paired side by side
- Unique to DockinaBox® our optional Dual Brake Mechanism prevents your PWC from rolling off the port during rider changes or when left unattended
- Optional quick disconnect bracket makes removal in the Fall a breeze. Available for both belt hinge and pole mount.



# SUNSPOT SWIM RAFT

DOCKINABOX.COM

## OUR SWIM RAFTS SIT LOW IN THE WATER MAKING THEM EASY TO BOARD

Made from 100% molded polyethylene plastic, they are safe and easy for anyone to use with no pinch points and a unique textured surface prevents slipping.

- 1500 lb. weight capacity
- Textured surface offers unmatched grip
- Rigid under ribbing eliminates rippled surface
- Rounded cell design allows for easy cleaning and superior drainage
- Smooth and comfortable seat position
- Seats can be removed for a clean, unobstructed raft surface
- Seats include molded cup holders
- Boarding ladder optional



Only 7" above water designed for lakes with waves less than 3ft.



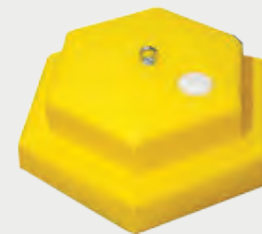
**Fun with or  
without seats  
and ladders.**



**DockinaBox® is committed  
to the environment and uses  
100% recyclable materials**



4 Point Chain Anchor  
Kit - 245 lbs



Sand Filled Anchoring  
System - 200lbs & 300lbs



Aluminum 3 Step  
Ladder - Foldable

SUN SPOT 8' x 10' SWIM RAFT	\$2,295
Sand Filled Anchor 200 lbs	\$85
Concrete Anchor with SS Loop 245 lbs	\$90
Sand Filled Anchor 300 lbs	\$105
Contoured Seats Sold in Pairs	\$295
SunSpot 2' x 4' Slide	\$325
Complete 4 Point Anchoring Kit (includes anchor, chain, U bracket, ASA & Schackle	\$350
Swim Raft Aluminum 3 Step Ladder	\$350



# DESIGNER SERIES LADDERS

MADE IN CANADA

DESIGNER SERIES LADDERS

## Designer Series Ladders

DockinaBox® has perfected the dock ladder. Designed to feel more like stairs than ladders, the designer series ladders have angled sides and are constructed using highly engineered extrusions. With an anodized finish using only stainless steel hardware, the designer series ladders will stand up to the test of time.

- Frames constructed using 1 ¼" aluminum - thicker and stronger than other marine ladders and tested to hold over 250 lbs.
- A more natural climbing angle makes climbing in and out of the water safer and easier. Ladder frame rests firmly against the side of your dock, ensuring sturdy operation and reducing the "pry-bar" effect
- Wider steps with an ergonomic curve create a strong and comfortable tread. Anti-slip texture on each step prevents slips and falls. Bolt Down and Flip Off ladders are 15° ST Ladder® and Premium ST Ladder® are at a 20° incline
- Designed for simple assembly using high quality stainless steel fasteners - only one screwdriver is needed
- Each step is 10" apart



Inside Width = 16"  
Depth of Step = 6"  
Top of Loop = 23"

### Bolt Down Style

4 Step	\$595
5 Step	\$630
6 Step	\$645

Each Step down is 10"



Inside Width = 16"  
Depth of Step = 6"  
Top of Loop = 23"

### Flip Off Style

4 Step	\$630
5 Step	\$672
6 Step	\$735



Inside Width = 19"  
Depth of Step = 6"  
Top of Loop = 27"

### ST Ladder®

4 Step	\$785
5 Step	\$805
6 Step	\$835



Inside Width = 21.5"  
Depth of Top Step = 12"  
Depth of Steps = 5"  
Top of Loop = 29"

### Premium ST Ladder®

4 Step	\$925
5 Step	\$960
6 Step	\$995

Bolt Down shown



Quick Disconnect shown



Shown in "up" position



Shown in "up" position



Mounting Bracket is used for DockinaBox dock systems only.

For DockinaBox® docks only, the Ladder Support Bracket is needed

STD - \$85

HD - \$90



Bracket Kit SD - \$100

# NEW ENVIRONMENTALLY FRIENDLY ECO FLOATS

DOCKINABOX.COM

Our 100% recyclable Eco Float series are here! With a thicker wall than any other float on the market. Highly engineered bottom profile to eliminate ice crushing by raising the float out of the ice (**Ice Lift Zone**).

All of our floats can be recycled. Our floats can take a beating; some would say even "bullet proof". If within 15-20 years condensation builds up, the water can be simply drained, and float put back in service unlike Styrofoam. **Bonus: Not Having to Replace Floats.**

## ECO FLOATS

- Atmospherically vented to maintain equalized air pressure (**Gore Technology**)
- **100% recyclable** including the polyethylene foam inside
- The outer skin is on average .200" - .250" thick, almost 50% thicker than competitors. Inner foam wall is up to .5" thick.
- Eco Floats have a GENERATIONAL warranty with their purchase. Ask for details.

## ECO H-WALL FLOATS

- This float does not require foam wall due to its excessive outer skin thickness.
- The outer skin is on average .375" to .500" thick, 3 to 4 times thicker than competitors.
- Eco Floats are covered by a 15yr. warranty. Ask for details.

## ECO Dock Floats & Eco H-Wall Floats

Size	Buoyancy	Weight	Eco Float Price	Eco H Wall Price
3' x 4' x 12"	610 lbs.	56 lbs.	\$400	\$275
4' x 4' x 12"	830 lbs.	63 lbs.	\$550	\$360
3' x 6' x 12"	910 lbs.	68 lbs.	\$610	\$405
Foam Fitted Models	Bouyancy	Weight	Price	
2' x 4' x 12"	T-250-FM	430 lbs.	24 lbs	\$159
3' x 4' x 12"	T-675-FM	655 lbs.	36 kbs	\$239



DockinaBox® has invested over 3 million dollars in a high-tech facility with advanced equipment known in North America to produce a better more durable long lasting float product that is environmentally friendly.



# DOCK BENCHES

MADE IN CANADA

## Combo Dock Table / Seat

- Multiple uses; a Seat, Side Table & Shelf
- Adjustable height from 18" to 36"
- Available in 16" or 48" width
- Directly bolted to the DockinaBox® system

16" wide platform - \$ 325.00

48" wide platform - \$ 450.00



## Dock Bench

- Ergonomically Designed for comfort
- All Aluminum 4ft wide
- Available In Powder Coated BEIGE or GREY finish
- Can be mounted on other dock brands



Available in Backrest or Backless models

Back Rest Bench - \$ 795.00

Without Back Rest Bench - \$ 525.00

DockinaBox® system require Mounting Brackets;

Standard Duty Bracket \$85.00

Heavy Duty Bracket \$90.00



## Dock Umbrella Stand

- For DockinaBox® Standard or Heavy Duty Post Dock systems
- Designed for Limitless Location Mounting
- Structurally Designed for Cantilever Umbrellas up to 10ft sizes
- Universal Mounting Plate for Standard Umbrella Bases
- Acceptable for Standard Pole Umbrellas

Bracket Price \$395.00 Adapter Plug for Bolt down \$90.00



# DOCK & MOORING ACCESSORIES

DOCKINABOX.COM

## DOCK STAIRS & RAILING SYSTEM

Stair system utilizing DeckWave® Decking, designed to be used in water. Rise is 8 inch and each step is 12 inches deep, steps are 36 inches wide with Non-Slip DeckWave® Decking. Available from 3 steps up to 6 steps.

Optional interchangeable right/ left or both hand rails available.



Railing		Single
3 Step	\$635	\$255
4 Step	\$925	\$315
5 Step	\$1,195	\$375
6 Step	\$1,495	\$435

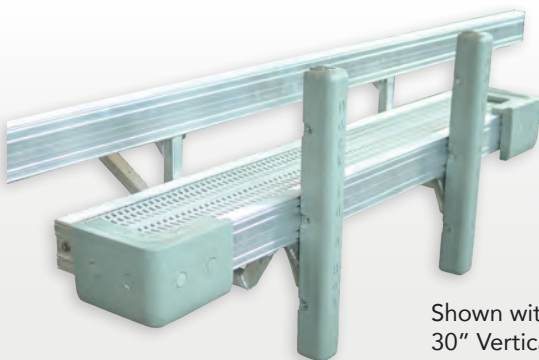
Hold Down Kit \$185

Includes Anchor, Chain, Bracket and Turnbuckle

Includes adjustable foot pads.

## LOWER LEVEL BOARDING PLATFORM

Lower Level Boarding Platform mount to the 40" spacing on all Standard Duty, Heavy Duty, and Super Duty Docks allows easier access to launch paddle boards, kayaks, etc. Platform is 12" wide and sits 10" down from the top of the dock. Available in 6ft and 8ft lengths. Complete with all mounting hardware.



	6ft	8ft
STD/ HD	\$650	\$750
SD	\$650	\$875

Shown with optional Accessories:  
30" Vertical Bumpers & Corner Bumpers



## DOCK WHEEL TRANSPORT KIT

Make it easier installing or removing your dock annually with our exclusive DockinaBox® Wheel Transport Kit. Our Wheel Clamp Kit attaches permanently to your dock legs, making it easy to slide on the wheel bracket with additional clamp kits.

Dock Wheel Transport Kit for 1.900" Diameter Pipe	\$455/set
Dock Wheel Transport Kit for 2.375" Diameter Pipe	\$485/set
Additional Dock Clamp Set for 1.900" Diameter Pipe	\$105/set
Additional Dock Clamp Set for 2.375" Diameter Pipe	\$135/set

## MUD PADS

Prevent pipe legs from sinking in muddy or silty lake bottoms where up to 6" of sinkage is possible.

\$80 Each



## BOAT LIFT WHEEL TRANSPORT KIT

Exclusive to DockinaBox®, these vertical wheel kits attach to almost any lift making season install or removal easy.

Lift Jack without wheels (adjustable)	\$725
Lift Jack with wheels (adjustable)	\$895
Lift Jack without wheels (fixed)	\$525
Lift Jack with wheels (fixed)	\$695
27" Plastic Wheel	\$100



# DOCK & MOORING ACCESSORIES

MADE IN CANADA

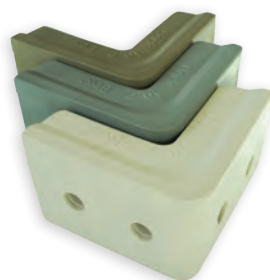
## VERTICAL SLIDING BUMPER\*

Exclusive to DockinaBox®, these vertical bumpers protect your dock and your vessel regardless of the water level. Nearly limitless vertical and horizontal adjustability.

30" Vinyl Vertical Bumper*	\$95
42" Vinyl Vertical Bumper*	\$105
STD Bracket	\$85
HD Bracket	\$90
Super Duty Bracket	\$115
VSB Brace	\$70

VSB Bracket:  
Used when  
VSB is fully  
extended.

Side Mount      End Mount



## CORNER BUMPERS

While All Purpose Bumpers cover the top corner, our Designer Series, exclusive to DockinaBox® covers both the top, side and the bottom of your dock, protecting your watercraft and swimmers.

Designer Bumper\* STD, HD and SD \$95  
Available in Beige, Grey and Sand

Note: Std and HD sizes cover top, side & bottom. SD size covers top and side only.

Generic Corner Bumper \$45  
Available in Grey, Black, White and Beige



## MOORING WHIPS

The spring action of a mooring whip will keep your boat a safe distance from the dock in conditions of wind and high wake.

3,000 lb. capacity (8' pole)	\$395
5,000 lb. capacity (12' pole)	\$500
10,000 lb. capacity (14' pole)	\$650
Regular Spring Line Kit - 15'	\$35
Long Spring Line Kit - 22'	\$40



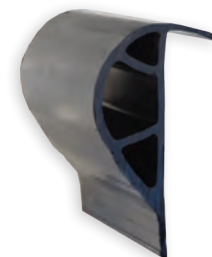
## DOCKSIDE BUMPER

Protect the dock and your watercraft from side damage with the dock side bumper designed by DockinaBox®. Our Dock Side Bumpers are available by the foot or 50' roll and are designed to match with our bulk bumpers.

Slide in Bumper \$5.95/ft.  
Available in Beige and Grey

Bulk Bumper (50' roll) \$7.95/ft.  
Available in Grey, Black and White

Stainless Screws - 50pcs./pack \$15.00/bag  
Stainless Washers - 50pcs./pack \$15.00/bag



## FLIP UP DOCK CLEATS

Eliminate trip hazards with this sleek design that flips up for mooring and flips down when not in use.

4" Aluminum	\$25	Powder Coated	\$30
5" Aluminum	\$30	Powder Coated	\$35
7" Aluminum	\$35	Powder Coated	\$40
Colours available - Beige, Grey or Sand			

7" Reinforced Plastic Cleats \$25  
Colors available- Black, Blue, Red, Grey, Beige

\*Dock Mounting Hardware Kit \$7



\* This accessory applicable on DockinaBox® Dock Systems only.

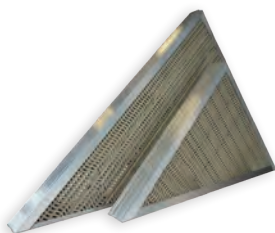
# DOCK & MOORING ACCESSORIES

DOCKINABOX.COM

## INSIDE CORNERS\*

Enhance the appearance of your dock while adding up to 18 sq. ft.. Makes a great place to mount our ladders.

	Std	HD	SD
4' x 4'	\$925	\$1,225	\$1,325
6' x 6'	\$1,225	\$1,450	\$1,650



## KAYAK RACK

Safely store your kayaks, canoes and paddle boards conveniently on the dock using the exclusive mounting brackets.

Single Rack	\$600
Double Rack	\$700
Triple Rack	\$800



## CROSS BRACES\*

When putting your dock in deep water, you can add the telescopic cross brace for added reinforcement to eliminate movement in rough waters.

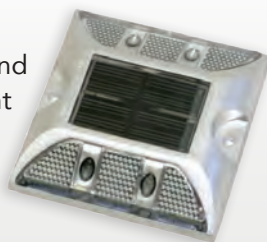
Up to 7' Dock Height	\$140
Up to 9' Dock Height	\$150



## SOLAR LIGHTS

Low profile design makes it perfect for docks and marina applications needing to provide ambient pathway and dock lighting.

Aluminum Solar Light	\$50
Mounting Hardware*	Twin Pack \$5



## DOCK HINGES\*

Heavy duty floating dock stainless steel hinges are 1/4" thick laser cut stainless steel and used for floating docks and ramp section with our Heavy Duty and Standard Duty Series. Includes hinge pin, clip, plate and hardware.

HD \$95 STD \$90  
HD Locking Hinge \$110  
STD Locking Hinge \$105  
Mounting Hardware \$20



## CHAIN CONNECTOR FOR FLOATING DOCK\*

Heavy-Duty Stainless-Steel Anchor Brackets to be used for all floating dock applications where an anchor is required for stability. Stainless Steel is 25% stronger than Galvanized steel and will never rust.

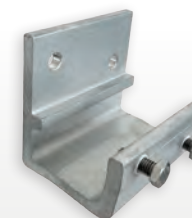
\$55 Each



## ROUGH WATER HOLD DOWN BRACKET\*

Stainless Steel Anchor Chain Bracket for all Pipe dock applications where an anchor is required for stability. Stainless Steel is 25% stronger than Galvanized steel and will never rust.

\$50 Each



## SHORE MOUNTING BRACKET\*

Connecting your dock to the shore, a brake wall or existing dock structure is made easy with our shore mounting brackets.

\$55 Each



# BOAT LIFT AND DE-ICER ACCESSORIES

## BOAT LIFT WINCH MOTOR

Attaches to most brands of boat lift winches with the Adapter Kit. Available for AC or DC power.

AC Lift Remote Control with Auto Stops \$1,995

DC Lift Remote Control with Auto Stops \$1,995

RGC Adapter Kit \$150

Dutton Lansing Adapter Kit \$145

PWC AC Switched Hefty Hoist \$1,795

PWC AC Remote Control Hefty Hoist \$2,195

PWC AC Remote Control Lake Lifter incl. winch \$1,995

PWC DC Remote Control Lake Lifter incl. winch \$2,245 \*

\* Includes Power Drive winch, Box, Solar Panel & Charge Controller

12v or 24v Charge Controller \$150

Larger Lifts 12v solar pack w/o Battery \$985 \*

Larger Lifts 24v solar pack w/o Battery \$1005 \*

\* Includes Box, Solar Panel, Charge Controller & Jumper Cable on 24

PWC AGM Battery 12v \$150

AGM Battery 12v \$345

Deep Cycle 24 series 12 v \$205

Jumper for 24v system Cable 12" length \$20



## FLAG POLE KIT - \$395

Includes 16ft. Pole and Mounting Bracket for Std. & HD Dock.



The de-icer is designed to prevent ice from forming around boats, marinas, docks and piers as well as effectively melting existing ice by breaking the surface with a continuous current of warmer bottom water.

## DE-ICING UNITS

¾ HP with 25' Cord \$1,225

¾ HP with 50' Cord \$1,560

¾ HP with 100' Cord \$1,895



## ACCESSORIES

Electric Timers from \$65

Thermostat Controller \$115

Dock Mounting Kit \$530

Replacement Propeller from \$40



"CAUTION" Sign \$115

1NM Amber Solar Beacon \$295

Post for Sign and Beacon \$115



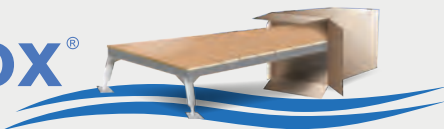
CRIMINAL CODE OF CANADA - Section 263 (1) - Duty to safeguard opening in ice. Everyone who makes or causes to be made an opening in ice that is open to or frequented by the public is under a legal duty to guard it in a manner that is adequate to prevent persons from falling in by accident and is adequate to warn them that the opening exists.





# DockinaBox®

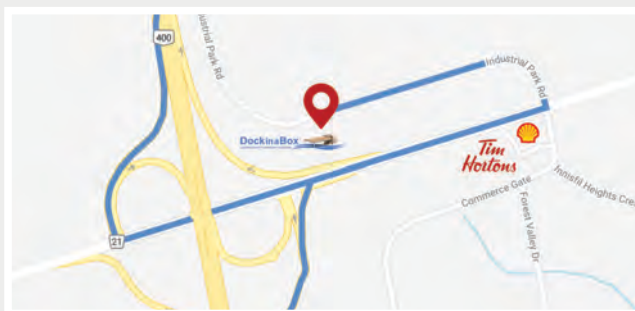
LEADING EDGE TECHNOLOGY & DESIGN



2100 Industrial Park Road  
Innisfil, Ontario, Canada L9S 0E4

**CONTACT US TODAY!**

1-877-877-2561  
sales@dockinabox.com  
dockinabox.com



Exit 85 from ON-400  
Innisfil Beach Rd /  
Simcoe County Rd 21



We are an environmentally  
friendly company

**Boating**  
Ontario

**Operation**  
Clean Sweep

**F C A**  
Federation of Ontario Cottagers' Associations

**NMMA**

**ASSOCIATION OF**  
ROTATIONAL MOLDERS  
**MEMBER**

HORTICULTURAL TRADES ASSOCIATION  
**landscape ontario.com**  
**CFIB** | In business for your business.