

# DockinaBox®

LEADING EDGE TECHNOLOGY & DESIGN



[DOCKINABOX.COM](https://dockinabox.com)



# CELEBRATING 23 YEARS

DOCKINABOX.COM



## BUY A PRODUCT THAT'S BUILT TO LAST!

For over 2 decades, we have continued to manufacture only the most technically advanced, feature rich product that serve our client's needs. Our philosophy is quite simple... keep tolerances low and reliability high.

With over 30 years in the marine industry, DockinaBox® has the experience to assess your needs and ensure your purchase fulfills your requirements. We continue to use only the best materials, the most cutting-edge technology and skilled craftsmanship to produce the safest, most reliable and most adaptable dock systems, lifts and accessories on the market today.

DockinaBox® continues to service our clients, design new product and manufacture world class aluminum docks, boat lifts and accessories right here in Canada! Located just north of Toronto, DockinaBox® has over 40,000 square feet of manufacturing, distribution and warehouse facilities and boasts the largest indoor / outdoor showroom around. We invite you to come see us and fully interact with all of our products, both in and out of the water, because when you buy from DockinaBox® you're buying a product that's built to last!

Hello, I'm the Professor. Look for me to guide you through the unique features and benefits of our products. For example, did you know our testing exceeds National Building Codes for weight capacity?

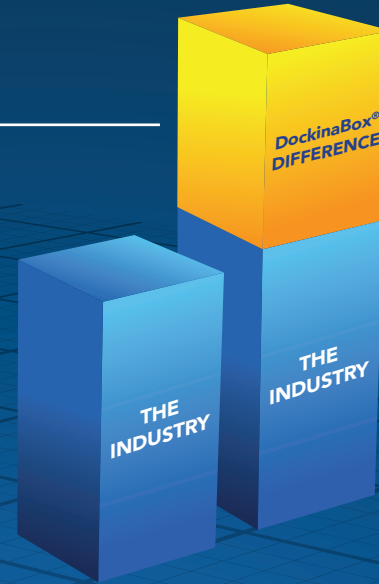


# CUTTING EDGE TECHNOLOGY. UNIQUE DESIGNS.

MADE IN CANADA

DockinaBox® patented products are designed and manufactured with precision and craftsmanship using technology unlike any other dock companies:

- DeckWave® Technology: low maintenance, non-slip, never hot, wave pressure dispersion, highest fatigue resistance with fastener-less installation
- Multi Chambered Frame: Increase load strength and rigidity for stability, comfort and safety
- Traction Safety Strip: Beveled and radiused side rails with 13 groove strips over a 2" distance ensuring safe ingress & egress
- Advanced Welding Technology & Robotics: Structural Integrity, Reliable & Repeatable Consistency with enhanced Durability using CMT Technology
- Wider Docks: Typically 2 1/2" wider than competitor and on average a 4% larger dock system
- Enhanced Decking Support: Six foot wide docks have 4 decking supports (14" Centres)
- CAD-CAM technology utilized in manufacturing for extreme precision
- All stainless steel hinges & hardware



## PIPE DOCKS:

- Patented Angled Legs: Stability, Strength and Safety, allows for use in deeper water applications
- Oversized Reinforced Footpad: Industry leading design allows pipe extension through footpad for more secure anchoring

## FLOATING DOCKS:

- Specially Designed heavy density foam wall float (no styrofoam): 30lbs/sq.ft buoyancy virtually eliminates corners from dipping and creates optimum ice lifting characteristics during the winter freeze
- Locking Hinges: Enables floating sections to become one rigid section utilized with our multi chambered frames

## WHY DO WE BUILD OUR PRODUCTS THE WAY WE DO?

Simple...Durability, Safety and Low Maintenance are the hallmarks of DockinaBox®.

Using Cold Metal Transfer welding, Yaskawa robotics and Canada's largest in ground shuttle roto-molding machine, we produce 90% of our products right here in Canada. We then use vigorous and punishing testing to assure we meet the highest standards. Modern in design, our products are durable and safe. Always challenging the status quo of the industry, we are constantly adding to our existing library of 20 Canadian and US patented and trademarked products.

When you buy a DockinaBox® product, it's manufactured by design, technology and experience to outlast the competition and by using premium materials, DockinaBox® has achieved almost 100% recyclable components on all dock and lift products - a first in the industry!



Example of Severe Weight Testing



Advanced CMT Robotic Welding Technology



Canada's Most Modern Rotomolding Machine



Constant Harsh Conditions



DECKWAVE®

DOCKINABOX.COM

# DECK WAVE®

## SEE THE DIFFERENCE

Gone are the days of sanding, staining, weatherproofing and repairing wood deck boards or assuming the high price of poor performing composites.

DeckWave® decking, exclusive only to DockinaBox®, continues to outperform, outlast and outsell every competitors product.

Consumers are shying away from the traditional wood dock option as natural wood materials such as cedar or the new pressure treated options are expensive and only prove to have a short lifespan due to the lack of preservatives and resin found in current wood products.

DeckWave® has been used by  
government ministries and agencies,  
harbor masters, marinas and  
landscapers across North America



Wood docks not only yield a shorter lifespan but require continual maintenance, ie. warping, splinters, nails, staining etc.

Alternately, DeckWave® decking is manufactured using structural foam infused co-polymer fiberglass reinforced plastic through a low-pressure cellular injection process which diminishes the likelihood of cracking and fading and in fact, has the highest strength to weight ratio when compared to other composite decking products on the market.

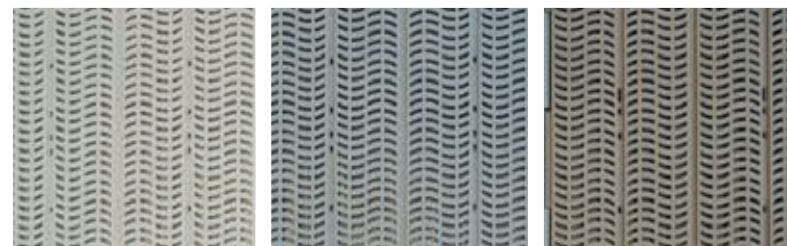


# THE NEW EVOLUTION OF CO-POLYMER FIBER INFUSED DECKING

MADE IN CANADA

Our exclusive DeckWave® decking features:

- Lightweight and physically manageable
- Never hot to touch, even in direct sunshine
- Superior traction when wet and dries fast
- **Vented design to disperse negative effects of wave action on your dock**
- **Dedicated cleat mounting locations on every panel**
- **Gap free vertical interlocking flex tab for clean seamless look**
- Known to reduce birds congregating on the dock
- Stain resistant, virtually no maintenance
- Crack resistant in extreme cold and when drilled
- Yes it is recyclable



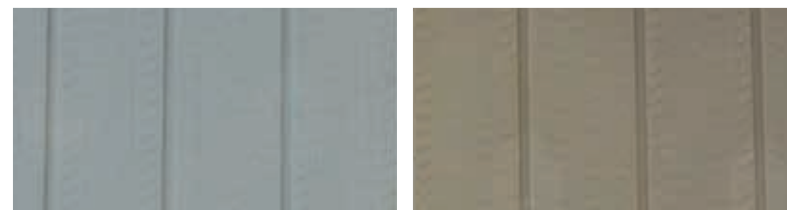
Sand

Grey

Beige

## DECKWAVE® - VENTED

Size	Colour	Price
2' x 4'	Grey, Beige or Sand	\$140.00
2' x 6'	Grey, Beige or Sand	\$175.00



Grey

Beige

## DECKWAVE® - SOLID

Size	Colour	Price
2' x 4'	Grey or Beige	\$140.00
2' x 6'	Grey or Beige	\$175.00

# STANDARD DUTY MODULAR PIPE SERIES

DOCKINABOX.COM

## INNOVATIVE DESIGN. PATENTED TECHNOLOGY.

Removable aluminum pipe docks are the option of choice for cottagers, waterfront communities and marinas. Whether it's a simple design for your watercraft or you plan on creating a water entertainment center, DockinaBox® can provide the dock and design to suit your lifestyle and needs.

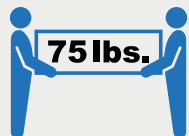
The Standard Duty Pipe Series Dock is one of our most popular options. It's robust enough to handle the elements and ideal for small bodies of water like the Muskoka's and Kawartha's, with waves no bigger than 3 feet. Weighing an average of 75 lbs. per frame, two people can easily manage its installation and annual removal.

Our modular design allows you to expand and add to your existing dock and design at any time, whether it's a patio, swim deck or an extra boat slip.

All Standard Duty Pipe Series docks come equipped with our DeckWave® decking, leg pockets, brackets, foot pads and hardware in accordance with your configuration.



## FEATURES



DECK WAVE



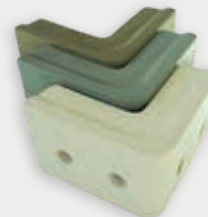
### Hold Down Kits - \$185

Keep your dock firmly planted to the lake bottom in rough conditions. Includes 245 lb. anchor, 6' chain and hardware bracket.



### Vertical Sliding Bumpers from \$180

These exclusive bumpers protect your vessel & dock regardless of water level heights. Horizontal & vertical adjustability. Available in 30" or 42" lengths.



### Designer Corner Bumpers - \$85

DockinaBox® exclusive design that protects your watercraft and swimmers as well. Our bumper covers top, side and bottom of the dock.



### Telescopic Cross Brace from \$160

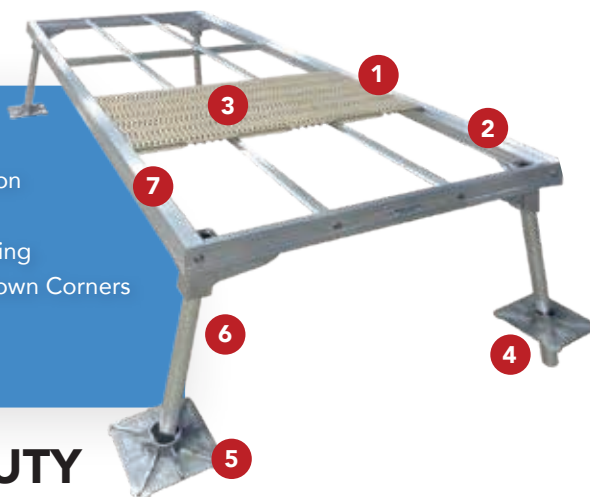
Optional telescopic cross braces add increased stability in deeper water conditions of 5 ft. or more.



# CUTTING EDGE TECHNOLOGY. UNIQUE DESIGNS

MADE IN CANADA

1. Slide in Deck Track
2. Dual Chambered Frame Extrusion
3. DeckWave®
4. Additional Lake Bottom Anchoring
5. Oversized Footpad with Turn Down Corners
6. 5° Angled & Adjustable Legs
7. Safety Side Traction Strip



## STANDARD DUTY

DockinaBox® has designed, developed and rigorously tested our technology for over 22 years to bring you the best pipe dock available on the market today and loaded with features:

- Dual chambered frames ensuring your dock resists flexing and warping caused by wave action and the mooring of watercraft
- Exclusive DeckWave® decking easily slides in and out, making installation and removal more manageable. It's never hot, requires low to no maintenance and has superior traction when wet
- **Patented 5° Adjustable Angled Legs** providing proven structural integrity and stance for increased stability and comfort
- Oversized footpads allow leg pipes to extend through the footpad providing additional security when anchoring the dock
- All docks welded with CMT technology

Size	Ramp Includes Frame & Decking	Self Standing Includes Frame, Decking, 4-Leg Assemblies and Hardware	Add End Includes Frame, Decking, 2-Leg Assemblies and Hardware	Add Side Includes Frame, Decking, 2-Leg Assemblies and Hardware	Add Back/Side (L/R) Includes Frame, Decking, 1-Leg Assembly and Hardware	Notched End Cap	End Cap
3' x 8'	\$1,109.00	\$1,845.00	\$1,515.00	\$1,587.00	\$1,498.00	n/a	\$95.00
4' x 8'	\$1,524.00	\$2,260.00	\$1,930.00	\$2,002.00	\$1,913.00	\$125.00	\$100.00
4' x 10'	\$1,874.00	\$2,610.00	\$2,280.00	\$2,352.00	\$2,263.00	\$125.00	\$100.00
4' x 12'	\$2,275.00	\$3,011.00	\$2,681.00	\$2,753.00	\$2,664.00	\$125.00	\$100.00
6' x 8'	\$2,164.00	\$2,900.00	\$2,570.00	\$2,642.00	\$2,553.00	\$135.00	\$110.00
6' x 10'	\$2,519.00	\$3,255.00	\$2,925.00	\$2,997.00	\$2,908.00	\$135.00	\$110.00
6' x 12'	\$3,055.00	\$3,791.00	\$3,461.00	\$3,533.00	\$3,444.00	\$135.00	\$110.00

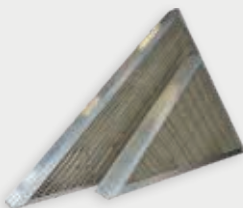
Pipe legs sold in 6" increments - 1.9" OD, 1½ Schedule 40 = \$11.00/ft. or 1.9" OD 1½" Schedule 80 = \$16.50/ft, Tri-Rib = \$16.50/ft.  
NOTE: Schedule 80 or Tri-Rib pipe is recommended for pipe lengths of 7ft or more.

Our exclusive,  
patented angled  
legs make our docks  
more stable than any  
straight leg design.



### Shore Mount Brackets - \$65

Connecting your dock to shore, a break wall or an existing dock structure is easy with our shore mounting bracket.



### Standard Duty Inside Corner

Enhance the appearance of your dock by adding up to 18 sq.ft. of space.

4' x 4' - \$895  
6' x 6' - \$1,195



### Flip Up Dock Cleats from \$35

Eliminate trip hazards with these sleek looking cleats that flip up for mooring watercraft and flip down when not in use. See accessories for options.



### Mud Pads - \$90

Prevent pipe legs from sinking in muddy or silty lake bottoms where 6" of sinking is possible.



### Std Duty Hinge - \$90

Used when a slope is required.

# HEAVY DUTY MODULAR PIPE SERIES

DOCKINABOX.COM

## INNOVATIVE DESIGN. PATENTED TECHNOLOGY.

Bodies of water come in all shapes and sizes. You need a dock that matches the elements you face every season. To meet that need, we have engineered our Heavy Duty Series dock system to match your waterfront and conditions.

Equipped with our 7° angled leg design for superior strength and stability, the Heavy Duty Series is designed for abuse and has proven to be as tough as they come. Tested in some of the roughest conditions on large lakes, including Lake Simcoe, Nipissing, and Georgian Bay, our docks continue to stand up against rough elements year after year.

Our vented, high performance DeckWave® decking is an essential piece of the Heavy Duty series, allowing wave energy to disperse through the decking and diminish strain on your dock. Like our other series, you can choose the colour of your decking which is included in your dock purchase, as are the leg pockets, brackets, foot pads and hardware in accordance with your configuration.



## FEATURES



**DECK WAVE**



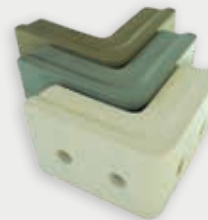
### Hold Down Kits - \$185

Keep your dock firmly planted to the lake bottom in rough conditions. Includes 245 lb. anchor, 6' chain and hardware bracket.



### Vertical Sliding Bumpers from \$185

These exclusive bumpers protect your vessel & dock regardless of water level heights. Horizontal & vertical adjustability. Available in 30" or 42" lengths.



### Designer Corner Bumpers - \$95

DockinaBox® exclusive design that protects your watercraft and swimmers as well. Our bumper covers top, side and bottom of the dock.



### Telescopic Cross Brace - \$160

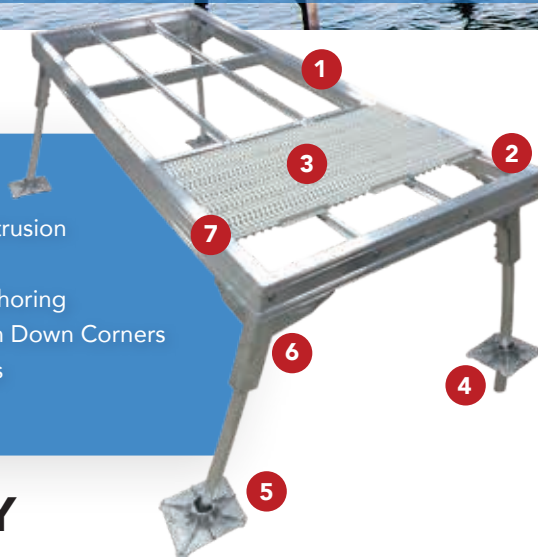
Optional telescopic cross braces add increased stability in deeper water conditions of 5 ft. or more.



# CUTTING EDGE TECHNOLOGY. UNIQUE DESIGNS

MADE IN CANADA

1. Slide in Deck Track
2. Triple Chambered Frame Extrusion
3. DeckWave®
4. Additional Lake Bottom Anchoring
5. Oversized Footpad with Turn Down Corners
6. 7° Angled & Adjustable Legs
7. Safety Side Traction Strip



## HEAVY DUTY

Through our rigorous testing, we have developed the Heavy Duty Series for medium to large lakes that experience heavy wave conditions. Our technology ensures our docks will last where others won't dare to venture.

- Triple chambered frames that increase the strength and torsional rigidity of the dock, helping to resist flex caused by heavy wave action and mooring large watercraft to the dock
- Internal Sliding Connectors and industrial strength knob brackets connect your docks together with incredible ease
- **Patented 7° Adjustable Angled Legs provide** structurally proven stance for an incredibly stable and comfortable dock, even in rough water conditions
- Our DeckWave® decking allows wave action to be dispersed through the vented decking and the slide in/out track ensures that your panels do not blow out

Size	Ramp Includes Frame & Decking	Self Standing Includes Frame, Decking, 4-Leg Assemblies and Hardware	Add End Includes Frame, Decking, 2-Leg Assemblies and End Mounting Hardware	Add Side Includes Frame, Decking, 2-Leg Assemblies and Side Mounting Hardware	Add Back/Side (L/R) Includes Frame, Decking, 1-Leg Assembly and Hardware	Notched End Cap	End Cap
4' x 10'	\$2,205.00	\$3,065.00	\$2,717.00	\$2,701.00	\$2,681.00	\$130.00	\$105.00
4' x 12'	\$2,676.00	\$3,536.00	\$3,188.00	\$3,172.00	\$3,152.00	\$130.00	\$105.00
4' x 14'	\$3,065.00	\$3,925.00	\$3,577.00	\$3,561.00	\$3,541.00	\$130.00	\$105.00
6' x 10'	\$2,905.00	\$3,765.00	\$3,417.00	\$3,401.00	\$3,381.00	\$140.00	\$115.00
6' x 12'	\$3,525.00	\$4,385.00	\$4,037.00	\$4,021.00	\$4,001.00	\$140.00	\$115.00
6' x 14'	\$4,125.00	\$4,985.00	\$4,637.00	\$4,621.00	\$4,601.00	\$140.00	\$115.00
8' x 10'	\$4,625.00	\$5,485.00	\$5,137.00	\$5,121.00	\$5,101.00	\$150.00	\$130.00
8' x 12'	\$5,615.00	\$6,475.00	\$6,127.00	\$6,111.00	\$6,091.00	\$150.00	\$130.00
8' x 14'	\$6,445.00	\$7,305.00	\$6,957.00	\$6,941.00	\$6,921.00	\$150.00	\$130.00

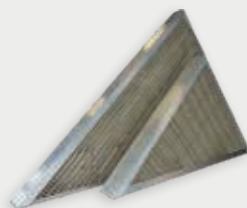
Pipe legs sold in 6" increments - 1.9" OD, ½ schedule 40 = \$11.00/ft. or 1.9" OD schedule 80 = \$16.50/ft, Tri-Rib = \$16.50/ft.  
NOTE: Schedule 80 or Tri-Rib pipe is recommended for pipe lengths of 7ft or more.

**Our internal sliding frame connectors and knob brackets add additional strength and make assembly easy!**



### Shore Mount Brackets - \$65

Connecting your dock to shore, a break wall or an existing dock structure is easy with our shore mounting bracket.



### Heavy Duty Inside Corner

Enhance the appearance of your dock by adding up to 18 sq.ft. of space.

**4' x 4' - \$1,195**  
**6' x 6' - \$1,595**



### Flip Up Dock Cleats from \$35

Eliminate trip hazards with these sleek looking cleats that flip up for mooring watercraft and flip down when not in use. See accessories for options.



### Mud Pads - \$90

Prevent pipe legs from sinking in muddy or silty lake bottoms where 6" of sinking is possible.



### Std Duty Hinge - \$90

Used when a slope is required.



# SUPER DUTY MODULAR PIPE SERIES

DOCKINABOX.COM

## INNOVATIVE DESIGN. PATENTED TECHNOLOGY.

The Super Duty Pipe Series is designed to go where no other docks can.

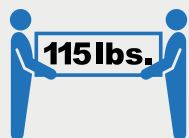
Unlike anything made in the consumer market today, the Super Duty Series is reliable in the harshest of conditions and able to accommodate watercraft and cruisers up to 50 ft. long. Ideal for large exposed and open bodies of water like the Great Lakes and perfect for select residential, commercial and marina use.

Our Super Duty Series comes equipped with our DeckWave® decking which allows 40% of wave energy to be dispersed, reducing decking blow outs and damage. You can choose the colour of your decking which is included, as are the leg stations, connecting brackets, foot pads and hardware in accordance with your chosen configuration.

Our DockinaBox® sections can be attached together with our exclusive sliding connector bracket system that allows for endless design options.



## FEATURES



DECK WAVE



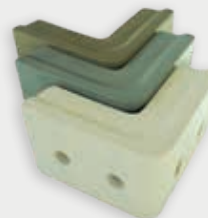
### Hold Down Kits - \$185

Keep your dock firmly planted to the lake bottom in rough conditions. Includes 245 lb. anchor, 6' chain and hardware bracket.



### Vertical Sliding Bumpers from \$185

These exclusive bumpers protect your vessel & dock regardless of water level heights. Horizontal & vertical adjustability. Available in 30" or 42" lengths.



### Designer Corner Bumpers - \$95

DockinaBox® exclusive design that protects your watercraft and swimmers as well. Our bumper covers top, side and bottom of the dock.



### Telescopic Cross Brace - \$160

Optional telescopic cross braces add increased stability in deeper water conditions of 6 ft. or more.



# CUTTING EDGE TECHNOLOGY. UNIQUE DESIGNS.

MADE IN CANADA

1. Triple Chambered Frame
2. Unique 9°Angled Leg Stanchions
3. Additional Lake Bottom Anchoring
4. Oversized Foot pad with Turn Down Corners



## SUPER DUTY

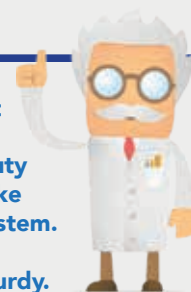
The Super Duty Series is made to survive in large open bodies of water or for light commercial use. We use our patented technology and punishing tests to ensure our Super Duty docks are a better solution for large bodies of water.

- Triple chambered frames that increase the strength and torsional rigidity of the dock, resisting flexing caused by heavy wave action and mooring large watercraft to the dock
- All docks welded with CMT technology
- 9° Adjustable Angled Legs, double braced with built in gusseted stabilizers to provide unparalleled strength and unrivaled stability
- Internal Sliding Connectors and industrial strength knob brackets connect your docks together with incredible ease and provide you with exceptional strength & rigidity

Size	Ramp Includes Frame & Decking	Self Standing Includes Frame, Decking, 2-Leg Stanchions and Hardware	Add End Includes Frame, Decking, 1-Leg Stanchion and Hardware	Add Side Includes Frame, Decking, 2-Leg Stanchions and Hardware	Add Back/Side (L/R) Includes Frame, Decking, 1-Leg Stanchion and Hardware	Notched End Cap	End Cap
4' x 10'	\$2,930.00	\$3,945.00	\$3,519.00	\$3,970.00	\$3,677.00	\$130.00	\$110.00
4' x 14'	\$4,060.00	\$5,075.00	\$4,649.00	\$5,100.00	\$4,807.00	\$130.00	\$110.00
6' x 10'	\$3,480.00	\$4,615.00	\$4,129.00	\$4,640.00	\$4,286.00	\$140.00	\$120.00
6' x 14'	\$4,820.00	\$5,955.00	\$5,469.00	\$5,980.00	\$5,626.00	\$140.00	\$120.00
8' x 10'	\$5,305.00	\$6,700.00	\$6,084.00	\$6,725.00	\$6,273.00	\$150.00	\$130.00
8' x 14'	\$7,380.00	\$8,775.00	\$8,159.00	\$8,800.00	\$8,348.00	\$150.00	\$130.00

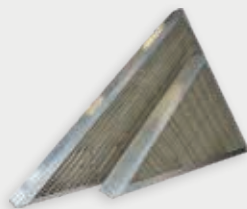
Pipe legs sold in 6" increments - 2.375" OD 2" Schedule 40 = \$15.50/ft. 2.375" OD 2" Schedule 80 = \$21.00/ft.

Built without compromise, the Super Duty Series is unlike any other system. Robust and incredibly sturdy.



### Shore Mount Brackets - \$65

Connecting your dock to shore, a break wall or an existing dock structure is easy with our shore mounting bracket.



### Super Duty Inside Corner

Enhance the appearance of your dock by adding up to 18 sq.ft. of space.

4' x 4' - \$1,295  
6' x 6' - \$1,795



### Flip Up Dock Cleats from \$35

Eliminate trip hazards with these sleek looking cleats that flip up for mooring watercraft and flip down when not in use. See accessories for options.



### Mud Pads - \$90

Prevent pipe legs from sinking in muddy or silty lake bottoms where 6" of sinking is possible.



# TOWER AND TOWERLESS SERIES

DOCKINABOX.COM

## Tower Docks in Lengths up to 54 Ft.

Our unique tower arch recesses into the frame so it is hidden during the summer months. When the tower is pulled up from the shore, each section of the dock is lifted up from the arch. The easy lowering and raising system saves annual dock installation and removal costs, making it a one person job.



Tower Dock Shown

## SUPER DUTY TOWER Series

4' x 24'	\$9,335	6' x 24'	\$11,315	8' x 24'	\$13,585
4' x 34'	\$13,435	6' x 34'	\$16,235	8' x 34'	\$19,565
4' x 44'	\$17,705	6' x 44'	\$21,165	8' x 44'	\$25,685
4' x 54'	\$20,635	6' x 54'	\$26,215	8' x 54'	\$31,805

## Towerless One Piece Frame for Lengths up to 28 Ft.

Our towerless docks offer a unique advantage over our tower docks. Utilizing the shoreline, a simple cable can be attached to a high point (hilltop, tree or pole) to lift the dock out of the water. A gin pole can also be integrated into the dock if there is not a high enough point to lift the dock.



Tower Dock Shown & Towerless in the Background

## HEAVY DUTY TOWERLESS Series for 4' Waves

4' x 20'	\$5,995	6' x 20'	\$7,050	8' x 20'	\$8,785
4' x 24'	\$7,195	6' x 24'	\$8,455	8' x 24'	\$10,575
4' x 28'	\$8,985	6' x 28'	\$9,855	8' x 28'	\$12,315

## SUPER DUTY TOWERLESS Series for 5' Waves

4' x 20'	\$7,455	6' x 20'	\$8,785	8' x 20'	\$10,395
4' x 24'	\$8,915	6' x 24'	\$10,515	8' x 24'	\$12,245
4' x 28'	\$10,915	6' x 28'	\$13,045	8' x 28'	\$15,175

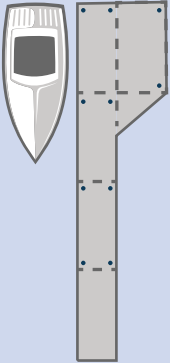
All pricing includes DeckWave® decking.  
Pipes, installation and shore work are extra.  
Tower winch and hardware kits from \$1,225.  
Optional walkway - \$30/ft.



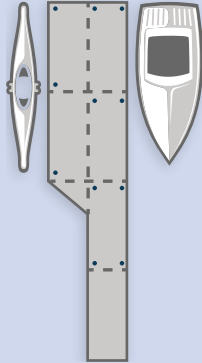
# MODULAR DESIGN

MADE IN CANADA

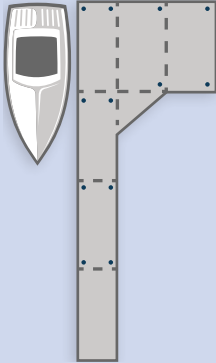
**DESIGN 1**  
Side Patio



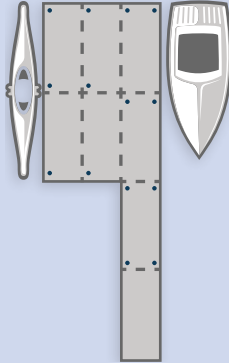
**DESIGN 2**  
Side Patio



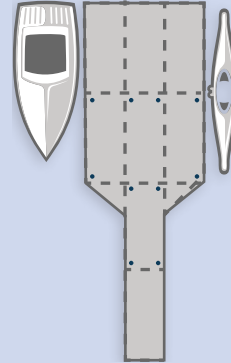
**DESIGN 3**  
Wide Patio



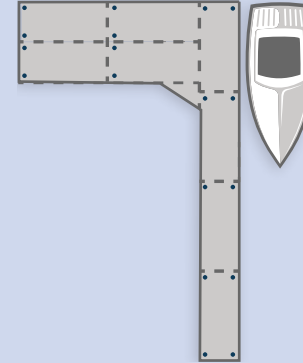
**DESIGN 4**  
Large Patio



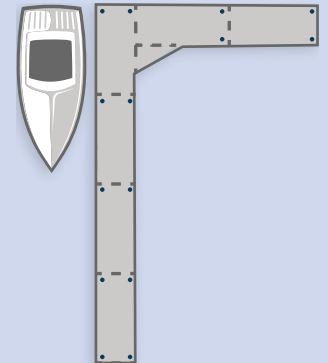
**DESIGN 5**  
Large Patio



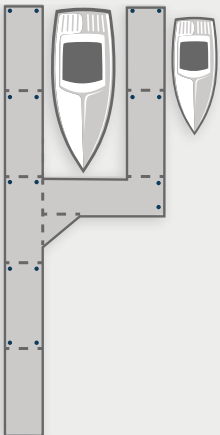
**DESIGN 6**  
L-Shaped Patio



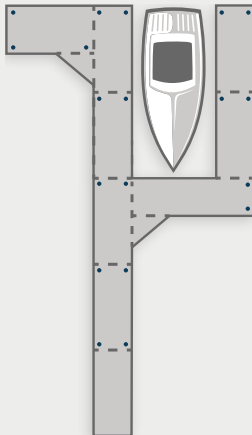
**DESIGN 7**  
L-Shaped Patio



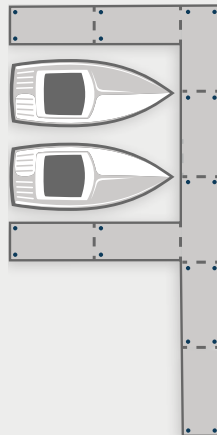
**DESIGN 8**  
Single Slip



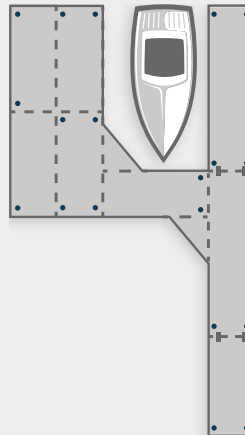
**DESIGN 9**  
Single Slip



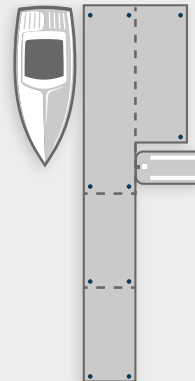
**DESIGN 10**  
Double Slip



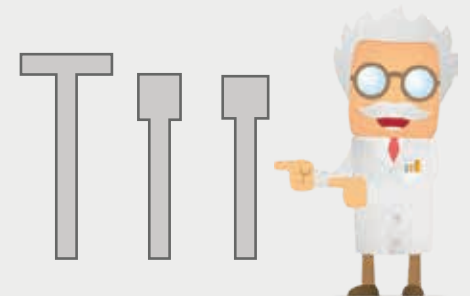
**DESIGN 11**  
Hybrid / Pipe Patio



**DESIGN 12**  
Floating with  
Patio



Often considered but rarely used, since these designs limit mooring options for your vessel.





# FLOATING DOCK SERIES

DOCKINABOX.COM

## FOR SOFT LAKE BEDS OR DEEP WATER

Able to accommodate boats up to 30 feet or more and ideal for residential or light commercial use.

Our HD-Floating Series of docks features heavy duty 100% polyethylene plastic Eco floats that feature heavier foam walls up to 1" thick and no Styrofoam inside for superior durability. **Discarding waterlogged Floats are be a thing of the past!**

Our **HD Floating Dock Series** is used in deep water situations where pipe docks cannot extend or in lake situations where the bottom is too soft and silty to support pipe dock feet, or where water variations are over two feet.

This series is fast and easy to install, and we have worked to ensure that our floating docks are so stable that the corner dips are minimized when standing at the corner of your dock.

Our **HD Floating Dock; Low-Profile Series** is used specifically for applications where a low freeboard is required. At only 8" above water these Docks are perfect for camps, paddle boards, kayaks, rowing boats, non-motorized lakes, dragon boats, canoes and commercial use for special low-profile requirements. These docks also features the Eco Floats.



Size	HD FLOATING DOCKS 15" FREE BOARD		LOW PRO HD FLOATING DOCKS 8" FREE BOARD		END CAPS	
	Semi Floating Ramp	Floating Section	Semi Floating Ramp	Floating Section	Notched for Hinges	Without Notch
4' x 10'	\$2,595	\$2,985	\$2,600	\$3,005	\$130	\$105
4' x 12'	\$3,056	\$3,417	N/A	N/A	\$130	\$105
4' x 14'	\$3,610	\$4,150	\$3,485	\$4,275	\$130	\$105
4' x 20'	\$4,925	\$6,005	\$4,785	\$5,995	\$130	\$105
4' x 24'	\$5,800	\$7,125	\$5,665	\$7,275	\$130	\$105
4' x 28'	N/A	\$8,400	N/A	\$8,565	\$130	\$105
6' x 10'	\$3,740	\$4,338	\$3,595	\$4,495	\$140	\$115
6' x 12'	\$4,481	\$4,952	N/A	N/A	\$140	\$115
6' x 14'	\$4,950	\$6,146	\$4,800	\$6,155	\$140	\$115
6' x 20'	\$6,883	\$8,775	\$6,735	\$8,995	\$140	\$115
6' x 24'	\$8,162	\$10,555	\$8,015	\$10,720	\$140	\$115
6' x 28'	N/A	\$12,365	N/A	\$12,380	\$140	\$115
8' x 10'	\$4,844	\$5,630	\$4,865	\$5,675	\$150	\$125
8' x 12'	\$5,646	\$6,424	N/A	N/A	\$150	\$125
8' x 14'	\$6,715	\$7,795	\$6,440	\$8,050	\$150	\$125
8' x 20'	\$9,165	\$11,325	\$9,115	\$11,305	\$150	\$125
8' x 24'	\$10,850	\$13,685	\$10,575	\$13,795	\$150	\$125
8' x 28'	N/A	\$15,600	N/A	\$16,110	\$150	\$125

Floating Docks can be combined with Pipe Series Docks. Note: All ramps 20' & 24' have option of a built-in cable cross at \$275.



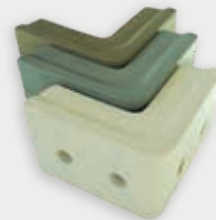
### Anchor Kits from \$245

Over 254 lbs. of concrete includes shock absorber, frame bracket, shackle and chain connector. Chain is available at a separate cost.



### Vertical Sliding Bumpers from \$185

These exclusive bumpers protect your vessel and dock regardless of water level heights. Horizontal & vertical adjustability. Available in 30" or 42" lengths.



### Designer Corner Bumpers - \$95

DockinaBox® exclusive design that protects your watercraft and swimmers as well. Our bumper covers top and side of the dock.



### Flip Up Dock Cleats from \$35

Eliminate trip hazards with these sleek looking cleats that flip up for mooring watercraft and flip down when not in use. See accessories for options.



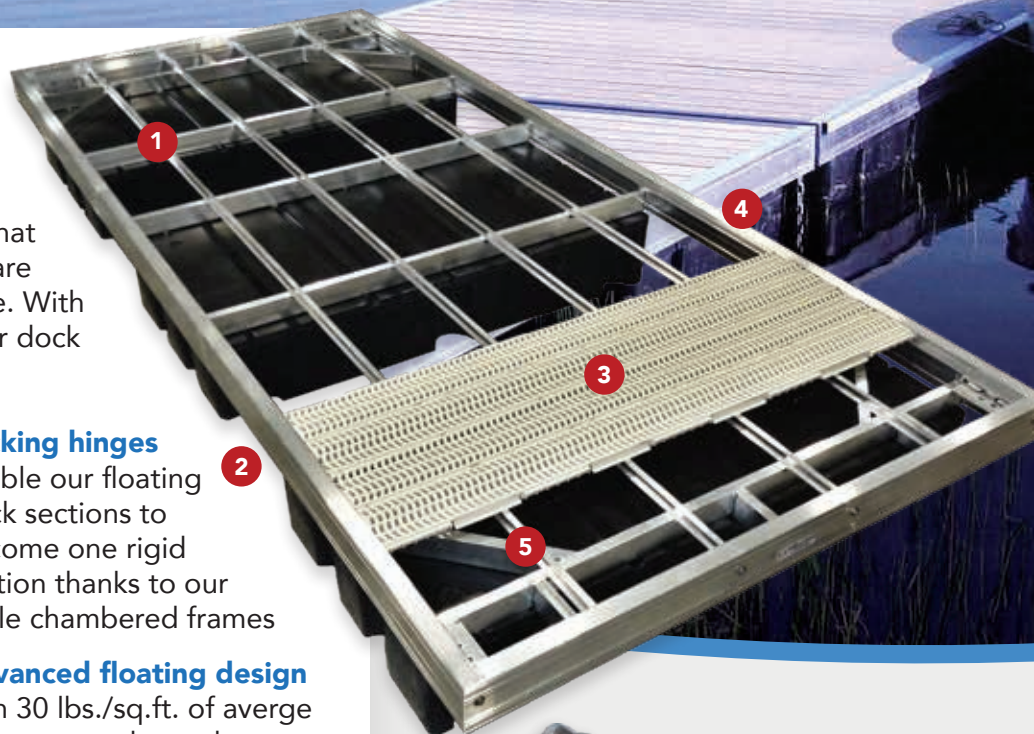
# FLOATING DOCKS HD SERIES

MADE IN CANADA

DockinaBox® floating systems are manufactured with the strongest substructure in the industry. Our superior design increases buoyancy and provides maximum stability so that corner dips are reduced. Our floats are 100% recyclable and Canadian made. With chains and our shock absorbers, your dock will be more stable than the rest.

- **Double braced frame at the hinge points** to eliminate frame racking and flexing, ultimately increasing the life expectancy of the dock
- **Plastic insulators** are used when stainless steel touches aluminum
- **Multi Chambered Frame extrusions** increases the load strength and rigidity of the dock for stability, comfort and safety
- The **traction safety strip** used on the top edge surface of the frame ensure safe ingress and egress
- **Locking hinges** enable our floating dock sections to become one rigid section thanks to our triple chambered frames
- **Advanced floating design** with 30 lbs./sq.ft. of average buoyancy, reduces the dock corners dipping into the water when you stand on them. Our float design also creates and optimizes ice lifting characteristics for when the water freezes in the winter
- All docks welded with **CMT technology**

Each floating section is designed with over 30 lbs./sq.ft. of buoyancy - significantly higher than other manufacturers. You'll feel less shaky compared to other systems on the market.

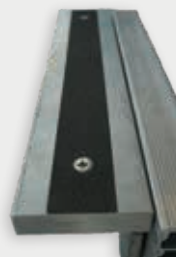


1. Decking supports spaced 16" or less
2. Evenly spaced floats to reduce drag in currents and allow flow through
3. DeckWave® with slide in track
4. Triple Chambered Frame
5. Double Braced frame and gusset to eliminate flex



**Heavy Duty Hinge - \$95**  
**Mounting Hwdr - \$20**

1/4" thick laser cut **stainless steel**, includes pin, clip, plate and hardware.



**Filler Strip - \$30/ft.**

Used to cover the locking hinges and create a seamless and safe platform when joining our floating docks together.



**Chain Connector - \$65 incl. Mounting Hwdr.**

Heavy-Duty **stainless steel** Anchor Brackets to be used for all floating dock applications and are stronger than regular steel.



**HD Hinge - \$110**  
**Mounting Hwdr - \$20**

1/4" thick laser cut **stainless steel**, used to lock floating dock sections together. 25% Stronger than regular steel hinges.

Our 6' x 20' Floating Dock can support up to 20 adults without getting your feet wet even on our Low Pro Series.



# FLOATING DOCKS STANDARD SERIES

DOCKINABOX.COM

## FOR SOFT LAKE BEDS OR DEEP WATER.

Able to accommodate boats up to 25 feet and ideally suited for smaller lakes where waves are under 2 ft. and not subjected to harsh conditions.

Our Standard Duty Floating series features our 100% recyclable plastic Eco Floats featuring foam wall thickness up to 1" and no Styrofoam. Eliminating water lodged floats. The Standard Duty Floating series features a lower freeboard of 13" and are more applicable for water crafts, small boats and non-motorized lakes.

Each section is designed for approx. 26 lbs. per sq. ft. of buoyancy.

All Standard Duty Floating Dock series are compatible with accessories optional on the Heavy Duty series and built with the unique features of the Heavy Duty line.

For a Larger Patio area, 2 sections of Floating dock can be locked together with our unique locking hinges.



### STANDARD FLOATING DOCK 13" FREE BOARD

### END CAPS

Size	Semi Floating Ramp	Floating Section	Notched for Hinges	Without Notch
4' x 10'	\$2,340	\$2,690	\$125	\$100
4' x 12'	\$2,755	\$3,075	\$125	\$100
4' x 14'	\$3,250	\$4,225	\$125	\$100
4' x 20'	\$4,435	\$5,405	\$125	\$100
6' x 10'	\$3,365	\$3,905	\$125	\$100
6' x 12'	\$4,035	\$4,460	\$125	\$100
6' x 14'	\$4,455	\$5,295	\$125	\$100
6' x 20'	\$6,195	\$7,845	\$125	\$100



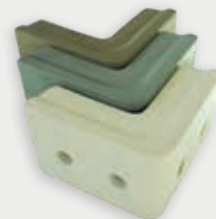
### Anchor Kits from \$245

Over 254 lbs. of concrete includes shock absorber, frame bracket, shackle and chain connector. Chain is available at a separate cost.



### Vertical Sliding Bumpers from \$185

These exclusive bumpers protect your vessel and dock regardless of water level heights. Horizontal & vertical adjustability. Available in 30" or 42" lengths.



### Designer Corner Bumpers - \$95

DockinaBox® exclusive design that protects your watercraft and swimmers as well. Our bumper covers top and side of the dock.



### Flip Up Dock Cleats from \$35

Eliminate trip hazards with these sleek looking cleats that flip up for mooring watercraft and flip down when not in use. See accessories for options.

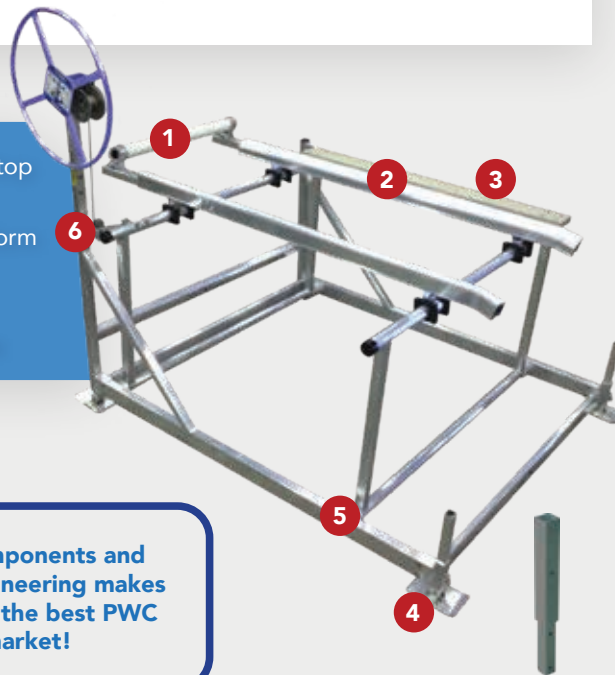
# LIFT 'N LOCK

DOCKINABOX.COM

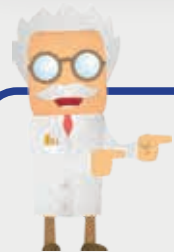
## PWC & ALUMINIUM BOAT CANTILEVERED LIFTS

The Lift 'N Lock PWC lift series is exclusive to DockinaBox® and designed for PWC and small watercrafts up to 15ft. These lifts feature dual position winches, heavy wall tubing at pivot points, mechanical lock in the UP position, up to 50" lift height (1250 Series), anti-theft lock location for enhanced security, interchangeable winch post locations for ultimate convenience, fully welded frames, standard adjustable 18" legs and vinyl covered bunks with angled down entry. Various options and accessories available.

1. Optional Adjustable Bow Stop
2. Vinyl & Aluminum Bunks
3. Optional Board Assist Platform
4. Adjustable Legs
5. Heavy Wall Pivot Points
6. Secure Stop with lock point



Winch Post  
Extension Option



**Welded components and custom engineering makes Lift 'N Lock the best PWC lift on the market!**

## LIFT 'N LOCK PRICING

Model	LL1100	LL1250	LL1250W
30" Hand Wheel	\$2,725	\$3,115	\$3,555
Electric Winch	\$3,395	\$3,800	\$4,235
Electric Remote Control	\$4,080	\$4,475	\$4,915

## SPECIFICATIONS

Model	LL1100	LL1250	LL1250W
Capacity	1100 lbs.	1250 lbs.	1250 lbs.
Lift Height	40"	50"	50"
Length	77"	96"	96"
Max Beam	60"	72"	84"
Height	80"	87"	87"
Weight	175 lbs.	250 lbs.	270 lbs.
Legs	18" Std	18" Std	18" Std

## LIFT 'N LOCK OPTIONS

Adjustable Bow Stop	\$385
Board Assist Platform	LL1100 Series - \$365 LL1200 Series - \$425
36" Legs	Upgrade \$70/pair or Non-upgrade \$195/pair
18" Winch Extension	All LL Series - \$110



# VERTICAL BOAT LIFTS

MADE IN CANADA

## Small to Large Vertical Boat Lifts

Vertical Lifts (VL) have an open structural design that allows easy access to your boat from both sides of the lift while the boat is in the water. VL platforms are designed to descend, lower and lift higher than the competition systems. This versatile range allows the same lift to be used for both shallow and deep water applications, as well as in areas with fluctuating water levels.

Constructed of marine grade aluminum in various weight classes, manual or remote control with either AC or DC electric power drives. Sunbrella® canopies are optional. Some models are available in 80" lift height.



## ULTRABUNK®

Our long lasting aluminum vinyl UltraBunk® can be adjusted up or down, from bow to stern and towed in & downward to better fit your watercrafts hull. **Another truly unique DockinaBox® design.**



## ULTRAGUIDE-IN®

Safely guide your boat into your lift with our aluminum and vinyl UltraGuide-In®. Designed to also provide a walkway to board or service your vessel. Shown with optional guide in roller.



Model	Capacity / Beam	Lift height	Main Water Depth	Weight	Bunks	Manual Winch	Remote Electric	Optional Guides
VL1250	1,250 lbs. / 65"	75"	8.5"	233lbs	Wood / Carpet	\$4,975	\$6,150	Wood / Carpet - \$565
VL16065	1,600 lbs. / 65"	68"	9"	415lbs	Wood / Carpet	\$6,450	\$7,650	UltraGuide-In® - \$1,025
VL20100	2,000 lbs / 100"	68"	9"	440lbs	UltraBunk®	\$7,575	\$8,775	UltraGuide-In® - \$1,025
VL35116	3,500 lbs. / 116"	68"	8"	505lbs	UltraBunk®	\$9,455	\$11,200	UltraGuide-In® - \$1,195
VL45116	4,500 lbs. / 116"	68" *	8"	507lbs	UltraBunk®	\$11,200	\$12,575	UltraGuide-In® - \$1,195
VL50124	5,000 lbs. / 124"	68" *	9"	583lbs	UltraBunk®	\$11,750	\$13,050	UltraGuide-In® - \$1,395
VL60124	6,000 lbs. / 124"	68" *	9"	643lbs	UltraBunk®	\$12,750	\$14,050	UltraGuide-In® - \$1,395
VL80124T	8,000 lbs. / 124"	78"	11"	860lbs	UltraBunk®	N/A	\$19,850	UltraGuide-In® - \$1,495
VL10132	10,000 lbs. / 132"	78"	13"	1217lbs	Wood / Carpet	N/A	\$28,950	Wood / Carpet - \$1,895

# VERTICAL SIDE LIFTS

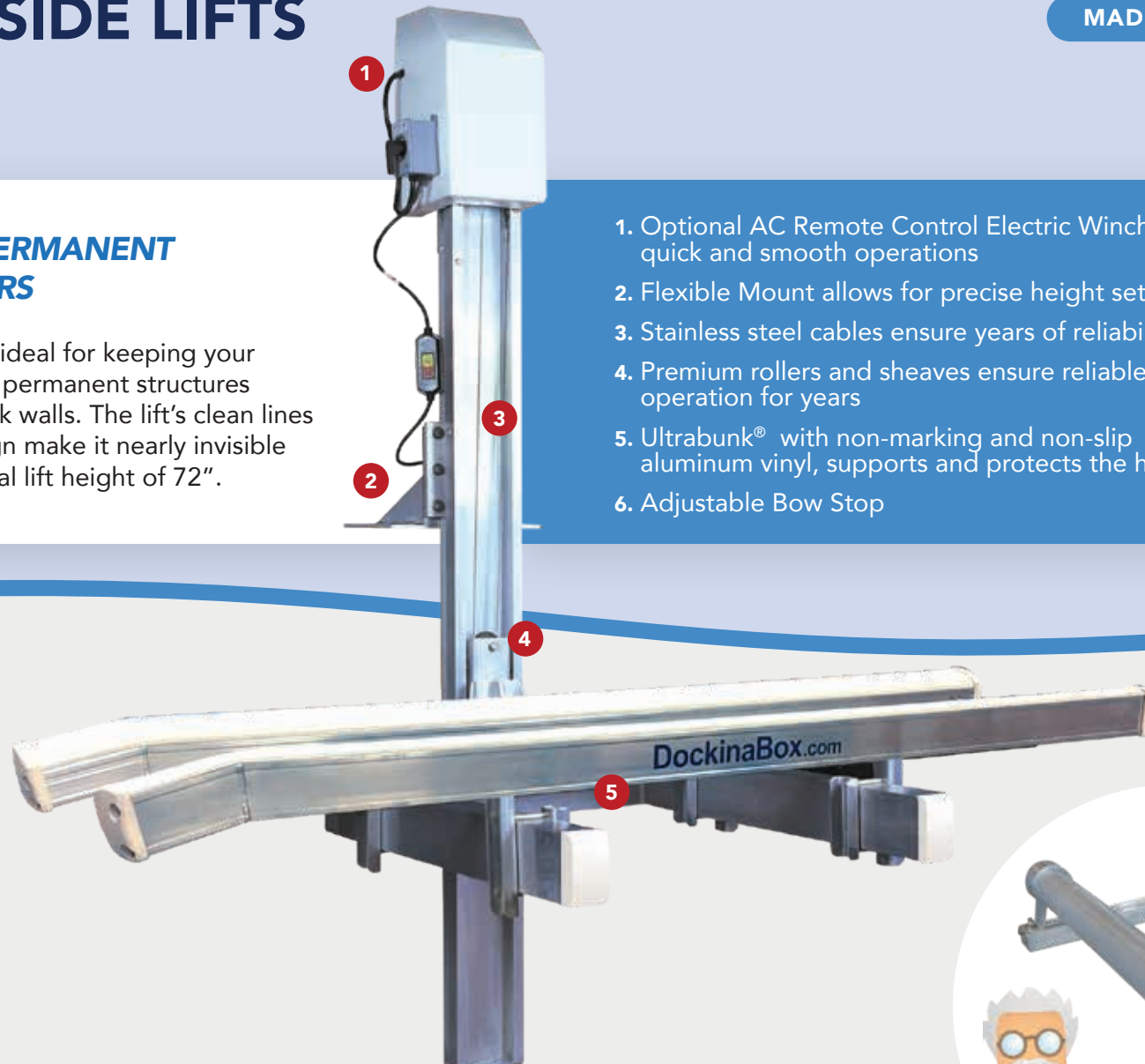
MADE IN CANADA

## PWC LIFT FOR PERMANENT DOCKS AND PIERS

The vertical side lift is ideal for keeping your PWC safely stored on permanent structures like crib docks or break walls. The lift's clean lines and simplicity of design make it nearly invisible when in use with a total lift height of 72".

1. Optional AC Remote Control Electric Winch for quick and smooth operations
2. Flexible Mount allows for precise height setting
3. Stainless steel cables ensure years of reliability
4. Premium rollers and sheaves ensure reliable operation for years
5. Ultrabunk® with non-marking and non-slip aluminum vinyl, supports and protects the hull
6. Adjustable Bow Stop

For Tall Dock Applications



Capacity (lbs)	Lift Height	Arm Length	Bunk Length	Switched AC Electric	Switched AC Remote	Weight (lbs)
VSL 1100	72"	42"	6.5'	\$3,675	\$4,365	275
VSL 1500	72"	52"	7.5'	\$4,115	\$4,800	295

Includes Telescopic Bow Stop for PWC positioning.





# HYDRAULIC LIFTS & KAYAK LAUNCHER

DOCKINABOX.COM



## Hydraulic Lifts

Hydraulic Lifts are available in 2000 to 12,000 lbs. capacities, in either 48" or 60" lifting heights. Quiet and fast with a less visible design than typical lifts make this a great unit for an unobstructed view of the lake. Includes complete solar power pack.

Capacity	Lifting Height	Min. Bunk Height	Shipping Weight (apx)	Price
1,750 lbs.	60"	25"	235 lbs.	\$10,395
2,000 lbs.	48"	24.5"	215 lbs.	\$10,595
4,000 lbs.	48"	25"	522 lbs.	\$16,065
4,000 lbs.	60"	26"	542 lbs.	\$16,255
6,000 lbs.	48"	29.5"	710 lbs.	\$17,915
7,000 lbs.	48"	29"	740 lbs.	\$19,460
7,000 lbs.	60"	30"	760 lbs.	\$19,850
9,000 lbs.	48"	29.5"	977 lbs.	\$27,415
9,000 lbs.	60"	31"	997 lbs.	\$28,045
12,000 lbs.	48"	48"	1,450 lbs.	\$37,655
12,000 lbs.	60"	60"	1,500 lbs.	\$38,230



## Kayak Launcher

The spring assisted launcher is for kayaks, paddleboards and canoes up to 50 lbs and 40 in wide. Effortlessly lowering your water toys in four lockable positions right down to 30 inches below the dock. Complete with adjustable bunks. **\$995.00**

# HYROLLER BOAT LIFT & MARINE RAILS

MADE IN CANADA



## Hyroller Boat Lift

"Necessity is the mother of all inventions." Owners of yachts and large vessels face a special challenge when it comes to protecting and storing their watercraft. We researched the market and were unimpressed with the features, engineering and long-term reliability of lifts available. Most were too fragile, unreliable, had insufficient lifting range, offered little protection and were not suited for varying water levels or for ice covered lakes.

Armed with engineering, aluminum, fabrication and extensive marine experience, DockinaBox® took a clean sheet approach to design and create the next generation of high capacity boat lifts.

Capacity	Max. Lift Height	Bunk / Qty Length	Length / Width	Starting Price
14,000 lbs	60" - 84"	4 / 20'	18' / 12'	\$40,245
18,000 lbs	60" - 84"	6 / 22'	24' / 13'	\$54,045
24,000 lbs	60" - 84"	6 / 22'	24' / 14'	\$67,845
30,000 lbs	60" - 84"	8 / 30'	32' / 15'	\$80,495



## Marine Rails

Marine Rails are available in 4,000 and 6,000 lb models. Easy to operate, they require low maintenance and offer a high corrosion resistance. Available in switched or remote control power driver.

Popular Components	Price
AR4000 Carriage (40' of Track)	\$8,300
AR4000 Power Drive - 1HP	\$4,815
AR4000 Remote Drive - 1HP	\$6,600
AR4000 Track Section (10')	\$975
AR6000 Carriage (20' of Track)	\$9,625
AR6000 Power Drive - 1.5HP	\$5,175
AR6000 Remote Drive - 1.5HP	\$7,125
AR6000 Track Section (10')	\$1,165



## Innovative Patent Design: Low Profile with Walkway



Technically the most advanced drive-on PWC port available on the market.



1. Optional **braking mechanism** prevents the PWC from rolling off the port during rider changes or when in storage - an industry first!
2. **Interchangeable Bow Stop** allows the unit to be configured with the walkway on left or right side
3. **Large stable 13" wide walkway** for convenient boarding and added buoyancy
4. **Air Vent chambers** on all six quadrants of the Port; raise, lower or tilt the port as required
5. Optional **EVA foam padding** adds traction using premium quality hydro turf mats
6. Can be mounted to fixed or floating docks using Belt Hinges or Pole Mount
7. Bow entry roller
8. Roller adjustment from 31" - 33" apart for different hull designs

### SPECIFICATIONS

DockinaPort® Bow & Stop	<b>\$3,095</b>
PWC Capacity + 2 People	<b>1,600 lbs.</b>
Length	<b>150 inches</b>
Width	<b>64 inches</b>
Weight	<b>320 lbs.</b>

### OPTIONS

EVA Foam Walkway (Blue or Grey)	<b>\$275</b>
Quick Disconnect Plate	<b>\$75/pair</b>
Dual Brake Mechanism	<b>\$295</b>
Belt Hinge (pair)	<b>\$535</b>
Pole Mount 31" (pair)	<b>\$500</b>
Pole Mount 45" (pair)	<b>\$545</b>



#### Pole Mount - Start at \$500

Ideal for mounting to a fixed dock or a breakwall. Available in 31" or 45" heights



Fits most docks.

#### Quick Disconnect Plate - \$75

Perfect for easy removal of your DockinaPort® system from your dock. Fits both Pole and Belt Mount.



#### Belt Hinge \$535

For mounting to a floating dock system. Custom applications can be accommodated.



#### Standard & Heavy Duty Brackets for DockinaBox® Docks

Std - \$85  
HD - \$90



## PATENTED LOW PROFILE DESIGN WITH WALKWAY

Years of development have resulted in the production of the most advanced PWC drive on port in the industry. No Styrofoam used in manufacturing process.



- The DockinaPort® is uniquely designed with a low profile
- The right width and length for current and past size watercraft
- Designed to handle either the smallest or the heaviest PWC due to the leveling air chambers
- The one-of-a-kind low profile and industry only adjustable buoyancy chambers gives you the ability to adjust the port easily to any quadrant you wish to raise, lower or tilt in any direction from one or all of the 6 air vents which is a unique exclusive feature
- Add the optional Hydro Turf EVA foam walkway for comfort and safety, a first in the industry exclusive to DockinaBox®
- Mount to the front or the side where you want with our flexible mounting systems depending on whether you have a fixed dock or floating system
- Our **large adjustable rollers are not exposed**, unlike other brands, and can be adjusted for different hull designs
- Easily configured to have the walkway on the left or right side with the **interchangeable bow stop and aft roller**
- An industry leader with a huge 13" wide walkway which provides a convenient boarding platform ideal for rider changes or for putting on a cover great when paired side by side
- Unique to DockinaBox® our optional Dual Brake Mechanism prevents your PWC from rolling off the port during rider changes or when left unattended
- Optional quick disconnect bracket makes removal in the Fall a breeze. Available for both belt hinge and pole mount.



# DESIGNER SERIES LADDERS

DOCKINABOX.COM

## Designer Series Ladders

DockinaBox® has perfected the dock ladder. Designed to feel more like stairs than ladders, the designer series ladders have angled sides and are constructed using highly engineered extrusions. With an anodized finish using only stainless steel hardware, the designer series ladders will stand up to the test of time.

- Frames constructed using 1 ¼" aluminum - thicker and stronger than other marine ladders and tested to hold over 250 lbs.
- A more natural climbing angle makes climbing in and out of the water safer and easier. Ladder frame rests firmly against the side of your dock, ensuring sturdy operation and reducing the "pry-bar" effect
- Wider steps with an ergonomic curve create a strong and comfortable tread. Anti-slip texture on each step prevents slips and falls. Bolt Down and Flip Off ladders are 15° ST Ladder® and Premium ST Ladder® are at a 20° incline
- Designed for simple assembly using high quality stainless steel fasteners - only one screwdriver is needed
- Each step is 10" apart



### Bolt Down Style

4 Step	\$565
5 Step	\$600
6 Step	\$615

Bolt Down shown



### Flip Off Style

4 Step	\$600
5 Step	\$640
6 Step	\$700

Quick Disconnect shown



### ST Ladder®

4 Step	\$750
5 Step	\$770
6 Step	\$795

Shown in "up" position



### Premium ST Ladder®

4 Step	\$880
5 Step	\$915
6 Step	\$950

Shown in "up" position



Mounting Bracket is used for DockinaBox dock systems only.

For DockinaBox® docks only, the Ladder Support Bracket is needed

STD - \$85

HD - \$90

Bracket Kit SD - \$100



# STAIRS, BOARDING PLATFORM AND WHEEL TRANSPORT KIT

MADE IN CANADA

## DOCK STAIRS & RAILING SYSTEM

Stair system utilizing DeckWave® Decking, designed to be used in water. Rise is 8 inch and each step is 12 inches deep, steps are 36 inches wide with Non-Slip DeckWave® Decking. Available from 3 steps up to 6 steps.

Optional interchangeable right/left or both hand rails available.



Includes adjustable foot pads.

		Single Railing
3 Step	\$635	\$255
4 Step	\$925	\$315
5 Step	\$1,195	\$375
6 Step	\$1,495	\$435

Hold Down Kit \$185

## Lower Level Boarding Platform

Lower Level Boarding Platform mount to the 40" spacing on all Standard Duty, Heavy Duty, and Super Duty Docks allows easier access to launch paddle boards, kayaks, etc. Platform is 72" x 12" and sits 10" down from the top of the dock. Complete with all mounting hardware.



STD/HD \$650  
SD \$675

Shown with optional Accessories:  
30" Vertical Bumpers & Corner Bumpers



Dock Clamp Set

## Dock Wheel Transport Kit

Make it easier installing or removing your dock annually with our exclusive DockinaBox® Wheel Transport Kit.

Our Wheel Clamp Kit attaches permanently to your dock legs, making it easy to slide on the wheel bracket with additional clamp kits. Adding additional clamps will allow wheels to easily be moved to alternate ends of the dock for placement or removal depending on the season's requirements.

Our Wheel Transport Kits are built to accommodate any series of our pipe docks. From 1.900" to 2.375" diameter pipes.

Dock Wheel Transport Kit for 1.900" Diameter Pipe	\$455/set
Dock Wheel Transport Kit for 2.375" Diameter Pipe	\$485/set
Additional Dock Clamp Set for 1.900" Diameter Pipe	\$105/set
Additional Dock Clamp Set for 2.375" Diameter Pipe	\$135/set



# SUNSPOT SWIM RAFT

DOCKINABOX.COM



## OUR SWIM RAFTS SIT LOW IN THE WATER MAKING THEM EASY TO BOARD

Made from 100% molded polyethylene plastic, they are safe and easy for anyone to use with no pinch points and a unique textured surface prevents slipping.

- 1500 lb. weight capacity
- Textured surface offers unmatched grip
- Rigid under ribbing eliminates rippled surface
- Rounded cell design allows for easy cleaning and superior drainage
- Smooth and comfortable seat position
- Seats can be removed for a clean, unobstructed raft surface
- Seats include molded cup holders
- Boarding ladder optional



Only 7" above water designed for lakes with waves less than 3ft.



Fun with or without seats and ladders.

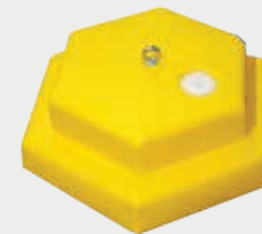


DockinaBox® is committed to the environment and uses 100% recyclable materials

<b>SUN SPOT 8' x 10' SWIM RAFT</b>	<b>\$2,295</b>
Sand Filled Anchor	<b>\$85</b>
Contoured Seats Sold in Pairs	<b>\$295</b>
SunSpot 2' x 4' Slide	<b>\$325</b>
Complete 4 Point Anchoring Kit (includes anchor, chain, U bracket, ASA & Schackle)	<b>\$350</b>
Swim Raft Aluminum 3 Step Ladder	<b>\$350</b>



4 Point Chain Anchor Kit - 245 lbs



Sand Filled Anchoring System - 200lbs



Aluminum 3 Step Ladder - Foldable

# NEW ENVIRONMENTALLY FRIENDLY ECO FLOATS

MADE IN CANADA

DockinaBox® New 100% recyclable Eco Floats are here! With a thicker wall than any other float on the market, up to .750", our floats are manufactured exclusively from recyclable polyethylene. In fact, we are so confident in our Eco Floats that DockinaBox® is offering a **GENERATIONAL** warranty with their purchase. Ask for details.

Our Eco Floats exclusive feature:

- Atmospherically vented to maintain equalized air pressure (**Gore Technology**)
- Highly engineered bottom profile to eliminate ice crushing by raising the float out of the ice (**Ice Lift Zone**)
- **100% recyclable** including the polyethylene foam inside
- The outer skin is on average .200 - .250 thick, almost 50% thicker than competitors (**Better Impact**)
- If within 15-20 years if condensation builds up, the water can be simply drained and float put back in service unlike Styrofoam **Bonus: Not Having to Replace Floats**

## ECO Dock Floats

Size	Buoyancy	Weight	Price
3' x 4' x 12'	610 lbs.	42 lbs.	\$400
4' x 4' x 12'	830 lbs.	56 lbs.	\$550
3' x 6' x 12'	910 lbs.	63 lbs.	\$610
Low Profile	Eco Floats - 8" Free Board		
4' x 4' x 8'	550 lbs.	38 lbs.	\$410
3' x 6' x 8'	640 lbs.	42 lbs.	\$460



1. Ice Lift Zone
2. Gore vent
3. Outer skin thickness



Made in Canada.  
100% recyclable.

DockinaBox® has invested over 3 million dollars in a high tech facility with the most advanced equipment in North America to produce a better more durable long lasting float product that is environmentally friendly.



# DOCK & MOORING ACCESSORIES

DOCKINABOX.COM

## VERTICAL SLIDING BUMPER\*

Exclusive to DockinaBox®, these vertical bumpers protect your dock and your vessel regardless of the water level. Nearly limitless vertical and horizontal adjustability.

30" Vinyl Vertical Bumper*	\$90
42" Vinyl Vertical Bumper*	\$100
STD Bracket	\$85
HD Bracket	\$90
Super Duty Bracket	\$115
VSB Brace	\$65

VSB Bracket:  
Used when  
VSB is fully  
extended.



## CORNER BUMPERS

While All Purpose Bumpers cover the top corner, our Designer Series, exclusive to DockinaBox® covers both the top, side and the bottom of your dock, protecting your watercraft and swimmers.

Designer Bumper\* STD & HD \$85 SD \$95  
Available in Beige, Grey and Sand

Note: Std and HD sizes cover top, side & bottom. SD size covers top and side only.

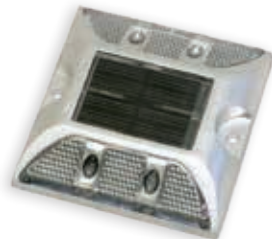
Generic Corner Bumper \$40  
Available in Grey, Black, White and Beige



## SOLAR LIGHTS

Low profile design makes it perfect for docks and marina applications needing to provide ambient pathway and dock lighting.

Aluminum Solar Light	\$50
Mounting Hardware*	Twin Pack \$5



## MOORING WHIPS

The spring action of a mooring whip will keep your boat a safe distance from the dock in conditions of wind and high wake.

3,000 lb. capacity (8' pole)	\$360
5,000 lb. capacity (12' pole)	\$560
10,000 lb. capacity (14' pole)	\$750
Regular Spring Line Kit - 15'	\$35
Long Spring Line Kit - 22'	\$40



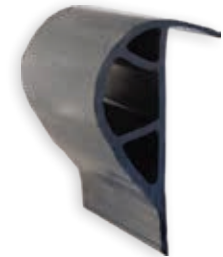
## DOCKSIDE BUMPER

Protect the dock and your watercraft from side damage with the dock side bumper designed by DockinaBox®. Our Dock Side Bumpers are available by the foot or 50' roll and are designed to match with our bulk bumpers.

Slide in Bumper \$5.95/ft.  
Available in Beige and Grey

Bulk Bumper (50' roll) \$7.95/ft.  
Available in Grey, Black and White

Stainless Screws - 50pcs./pack \$15.00/bag  
Stainless Washers - 50pcs./pack \$15.00/bag



## FLIP UP DOCK CLEATS

Eliminate trip hazards with this sleek design that flips up for mooring and flips down when not in use.

4" Aluminum	\$25	Powder Coated	\$30
5" Aluminum	\$30	Powder Coated	\$35
7" Aluminum	\$35	Powder Coated	\$40
Colours available - Beige, Grey or Sand			

7" Reinforced Plastic Cleats \$25  
Colors available- Black, Blue, Red, Grey, Beige

\*Dock Mounting Hardware Kit \$6



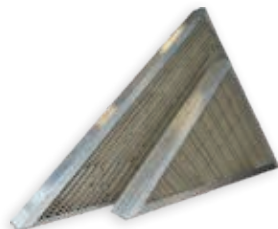
# DOCK & MOORING ACCESSORIES

MADE IN CANADA

## INSIDE CORNERS\*

Enhance the appearance of your dock while adding up to 18 sq. ft.. Makes a great place to mount our ladders.

	Std	HD	SD
4' x 4'	\$895	\$1,195	\$1,295
6' x 6'	\$1,195	\$1,595	\$1,795



## KAYAK RACK FOR DOCKINABOX® FRAMES\*

Safely store your kayaks, canoes and paddle boards conveniently on the dock using the exclusive mounting brackets.

Single Rack	\$600
Double Rack	\$700
Triple Rack	\$800



## CROSS BRACES\*

When putting your dock in deep water, you can add the telescopic cross brace for added reinforcement to eliminate movement in rough waters.

Up to 7' Dock Height	\$140
Up to 9' Dock Height	\$150
Cable Cross	\$275



## MUD PADS

Prevent pipe legs from sinking in muddy or silty lake bottoms where up to 6" of sinkage is possible.

\$80 Each



## HEAVY & STANDARD DUTY HINGES\*

Heavy duty floating dock stainless steel hinges are 1/4" thick laser cut stainless steel and used for floating docks and ramp section with our Heavy Duty and Super Duty Series. Includes hinge pin, clip, plate and hardware.

HD \$95 STD \$90 Mounting Hardware \$20



## CHAIN CONNECTOR FOR FLOATING DOCK\*

Heavy-Duty Stainless-Steel Anchor Brackets to be used for all floating dock applications where an anchor is required for stability. Stainless Steel is 25% stronger than Galvanized steel and will never rust.

\$50 Each



## ROUGH WATER HOLD DOWN BRACKET\*

Stainless Steel Anchor Chain Bracket for all Pipe dock applications where an anchor is required for stability. Stainless Steel is 25% stronger than Galvanized steel and will never rust.

\$55 Each



## SHORE MOUNTING BRACKET

Connecting your dock to the shore, a brake wall or existing dock structure is made easy with our shore mounting brackets.

\$55 Each





# LIFT ACCESSORIES & ICE EATER DE-ICERS

DOCKINABOX.COM

## BOAT LIFT WHEEL TRANSPORT KIT

Exclusive to DockinaBox®, these vertical wheels attach to almost any lift making season install or removal easy.

Smarte Jack with wheels	\$995
Smarte Jack without wheels	\$795
27" Plastic Wheel	\$110



## BOAT LIFT WINCH MOTOR

Attaches to most brands of boat lift winches with the Adapter Kit. Available for AC or DC power.

Remote Control (including cover)	\$2,585
Adapter Kit - Dutton-Lainson	\$160
Adapter Kit - RGC	\$180
DC12V Solar Kit Package	\$1,180
DC 24 V Solar Kit Package	\$1,395



## ULTRABUNK®

Long lasting aluminum vinyl UltraBunk® can be adjusted up or down, from bow to stern and towed in or out to better fit almost any boat lift application.

PWC 7.5'L	from \$800/pair
Boat Lifts 9.5'L	from \$1,135/pair
Boat Lifts 11.5'L	from \$1,395/pair



Custom Mounting Bracket Available and Priced Separately.

## ULTRAGUIDE-IN®

Safely guide your boat into your lift with our aluminum and vinyl UltraGuide-Ins®. Designed to provide a walkway to walkaround or board your vessel.

Ultra Guide-In® 10'L	from \$1,025/pair
HD Ultra Guide-In® 12'L	from \$1,245/pair
Roll In Wheel Kit	from \$145/pair



The Ice Eater is designed to prevent ice from forming around boats, marinas, docks and piers as well as effectively melting existing ice by breaking the surface with a continuous current of warmer bottom water.

## ICE EATER DE-ICING UNITS

¾ HP Ice Eater with 25' Cord	\$1,100
¾ HP Ice Eater with 50' Cord	\$1,195
¾ HP Ice Eater with 100' Cord	\$1,295



## ICE EATER ACCESSORIES

Electric Timers	from \$50
Thermostat Controller	\$105
Dock Mounting Kit	\$395
Replacement Propeller	from \$40



"CAUTION" Sign	\$105
1NM Amber Solar Beacon	\$250
Post for Sign and Beacon	\$105



CRIMINAL CODE OF CANADA - Section 263 (1) - Duty to safeguard opening in ice. Everyone who makes or causes to be made an opening in ice that is open to or frequented by the public is under a legal duty to guard it in a manner that is adequate to prevent persons from falling in by accident and is adequate to warn them that the opening exists.

# COTTAGE ACCESSORIES

DOCKINABOX.COM

## ANCHORS

Concrete weight used to firmly hold the floating system in place.

Jumbo Concrete Anchor - 300 lbs.	\$100
Concrete Anchor - 245 lbs.	\$95
Anchor Shock Absorber	\$55
Chain Connector	\$65
Shackle	\$6
Galv.5/16 Chain	\$6.95/ft



## TELESCOPE DOCK HEIGHT ADJUSTER

Used to help level, raise or drop your docking system once it is in the water without having to get wet. This can also be used to raise the end of your dock to install your Wheel Transport Kit.

\$495



## BIRD DETERRENT ROD

Aluminum rod which fastens to the DockinaBox dock the holds 2 horizontal fishing lines above the dock. These are sold in 2 or more to be most effective.

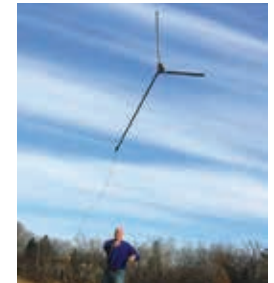
\$30 each



## SHEARS AND RAKES

Clear weeds quickly and effectively using the weed shear to cut the weeds at the lake bottom. The Floating Rake than collects the cuttings.

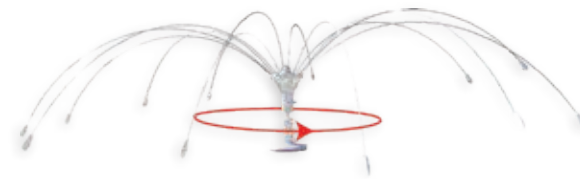
Weed Shear Aquatic Weed Cutter	\$300
Lake Rake Floating Rake	\$300



## BIRD DETERRENTS

As a preventative measure to repel birds, we have a large selection of humane ways of keeping birds off of your dock and waterfront properties.

Bird Spikes	\$55
360° Repeller (6' diameter)	\$120
Bird Spider (4' diameter)	\$120
Bird Spider (6' diameter)	\$140
Bird Spider (8' diameter)	\$160
Sand Bag Base	\$80
Plastic Red Tailed Hawk	\$40







# DockinaBox®

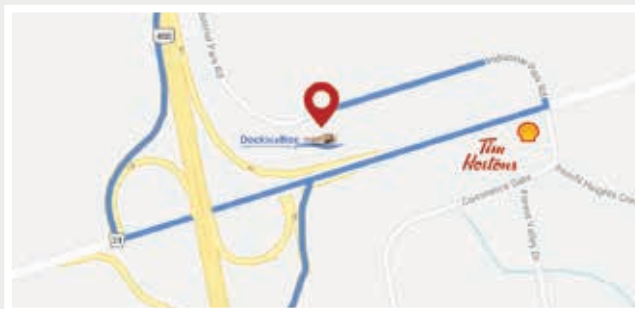
LEADING EDGE TECHNOLOGY & DESIGN



2100 Industrial Park Road  
Innisfil, Ontario, Canada L9S 0E4

**CONTACT US TODAY!**

1-877-877-2561  
sales@dockinabox.com  
dockinabox.com



Exit 85 from ON-400  
Innisfil Beach Rd /  
Simcoe County Rd 21



We are an environmentally  
friendly company

**Boating**  
Ontario

**Operation**  
Clean Sweep

**F C A**  
Federation of Ontario Cottagers' Associations

**NMMA**

**ASSOCIATION OF**  
ROTATIONAL MOLDERS  
**MEMBER**

HORTICULTURAL TRADES ASSOCIATION  
**landscape ontario.com**  
**CFIB** | In business for your business.